

71557-06 - S/M,250TIBQRC

Item..	X	Part Number..	Rev	Quantity.	Alt-Part#...	Reference Designator....	UM.	ECO No.	ECO Date	Strt Use	End Use	Ldtm
Description				Inv	Oper#			Yield%				
P 71557-06		D		1.0000			EA					0
S/M,250TIBQRC												
X 71558-02		E		1.0000			EA					0
MFD ITEM,250TI RH				L	10			100.00				
UNFINISHED CABINET, RIGHT												
X 59605-02		C		1.0000			EA	15376	01-10-95	01-10-95		2
M/I,LE14H-1				L	10			100.00				
X 62526-01		S		1.0000			EA	15376	01-10-95	01-10-95		2
M/I,108H				L	10			100.00				
X 65180		M		1.0000			EA	15376	01-10-95	01-10-95		2
M/I,104H				L	10			100.00				
20253		B		1.0000			EA					35
GASKET VINYL				L	10			100.00				
52671		C		1.0000			EA					28
GASKET REAR 116A				L	10			100.00				
21771		B		1.0000			EA					35
GASKET VINYL LE5-2				L	10			100.00				
66553		D		1.0000			EA					28
GASKET				L	10			100.00				
4.125ID X 5.00OD, .015THK												
21847		A		4.0000			EA					35
10-32X1 PHFLTHD BK				L	10			100.00				
OX												
33841		A		4.0000			EA					35
SCR,#10-32X1"FLFLHD				L	10			100.00				
BLACK												
12704		A		4.0000			EA					28
SCREW 6-32X1 FLTHD P				L	10			100.00				
H BK												
22369		D		3.0000			EA					35
#8X1 PHFLTHD WDS BK				L	10			100.00				
OX												
59460		A		8.0000			EA					35
SCR,#8X3/4FLHDPH-BLK				L	10			100.00				
PH,BLK OX,TYPE A,SMS												
20305S		A		4.0000			EA					42
GLIDE #20 5/8 DIA				L	10			100.00				
48003-02		A		1.0000			EA					40
LOGO 250TI				L	10			100.00				
BLACK BACKGROUND,GOLD LETTERS												
71317		A		1.0000			EA					7
GLOVES W/PLASTIC BAG				L	10			100.00				
71074		B		1.0000			EA					98
WRENCH,TERM POST XPL				L	10			100.00				



OCT 26 1998

## Single Level Bill of Materials

Page 5

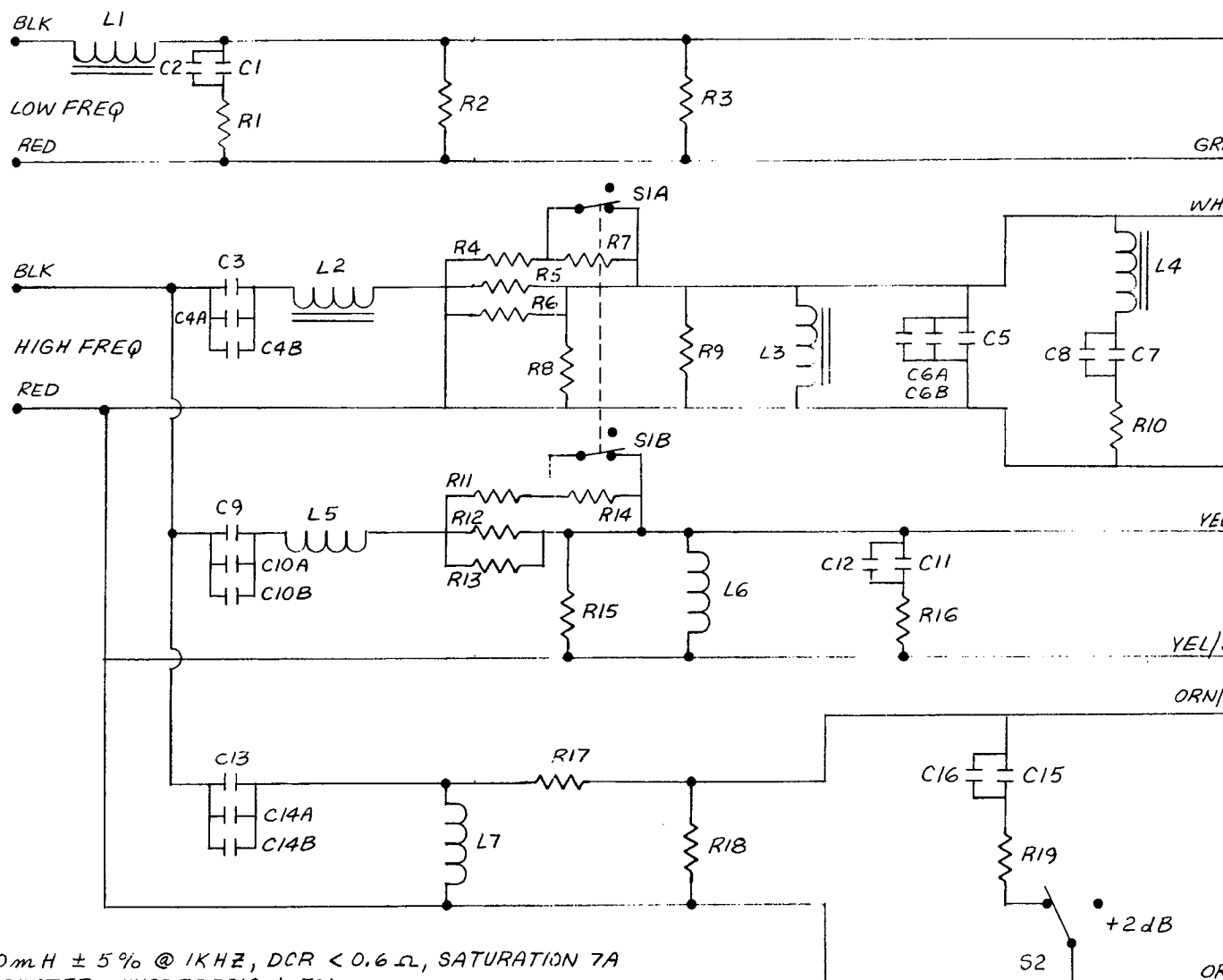
Procedure: ECC-R-07 - Account: ECC-NMG54

Effectivity Date : 10-26-98

71557-06 - S/M, 250TIBQRC

[illegible]

THESE DRAWINGS AND SPECIFICATIONS ARE THE PROPERTY OF JBL Incorporated. THEY ARE ISSUED IN STRICT CONFIDENCE AND SHALL NOT BE REPRODUCED, COPIED, OR USED AS THE BASIS FOR MANUFACTURE OR SALE OF APPARATUS WITHOUT WRITTEN PERMISSION.



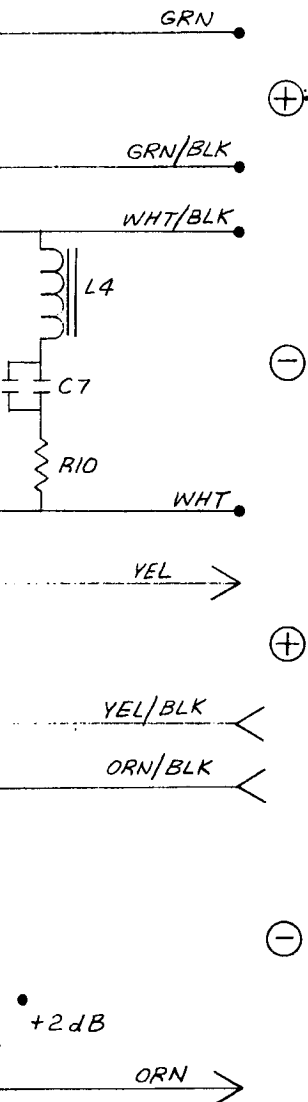
- L1 - 7.0 mH  $\pm 5\%$  @ 1 KHZ, DCR  $< 0.6 \Omega$ , SATURATION 7A OR GREATER, HYSTERESIS  $\pm 5\%$ .  
 L2 & L3 - 2.0 mH  $\pm 5\%$  @ 1 KHZ, DCR  $< 0.4 \Omega$ , SATURATION 6A OR GREATER, HYSTERESIS  $\pm 2\%$ .  
 L4 - 3.5 mH  $\pm 5\%$  @ 1 KHZ, DCR  $1.0 \Omega \pm 10\%$ , SATURATION .5A OR GREATER, HYSTERESIS  $\pm 2\%$ .  
 L5 - 0.3 mH  $\pm 5\%$  @ 1 KHZ, DCR  $< 0.4 \Omega$  AIRCORE.  
 L6 - 0.5 mH  $\pm 5\%$  @ 1 KHZ, DCR  $< 0.4 \Omega$  AIRCORE.  
 L7 - 0.18 mH  $\pm 5\%$  @ 1 KHZ, DCR  $< 0.3 \Omega$  AIRCORE.

- C1 - 24  $\mu$ F  $\pm 10\%$  @ 1 KHZ N.P.E. 100V, DF  $< 4\%$  (0.5A).  
 C3 - 40  $\mu$ F  $\pm 5\%$  @ 1 KHZ N.P.E. 100V, DF  $< 4\%$  (2.0A).  
 C5 - 32  $\mu$ F  $\pm 5\%$  @ 1 KHZ N.P.E. 100V, DF  $< 4\%$  (1.0A).  
 C7 - 6  $\mu$ F  $\pm 5\%$  @ 1 KHZ N.P.E. 100V, DF  $< 4\%$  (0.3A).  
 C9 - 12  $\mu$ F  $\pm 5\%$  @ 1 KHZ N.P.E. 100V, DF  $< 4\%$  (2.2A).  
 C11 - 8  $\mu$ F  $\pm 10\%$  @ 1 KHZ N.P.E. 100V, DF  $< 4\%$  (0.7A).  
 C13 - 2.5  $\mu$ F  $\pm 5\%$  @ 1 KHZ MYLAR (1.0A).  
 C15 - 1.5  $\mu$ F  $\pm 10\%$  @ 1 KHZ MYLAR (0.2A).  
 C2, C4A, C6A, C8A, C10A, C12, C14A & C16 - 0.01  $\mu$ F  $\pm 20\%$  @ 1 KHZ POLYPROPYLENE, 100V.  
 C4B, C6B, C10B & C14B - 0.005  $\mu$ F  $\pm 20\%$  @ 1 KHZ POLYSTYRENE, 100V.

- R1 - 7.5  $\Omega \pm 5\%$  10W.  
 R2 & R3 - 82  $\Omega \pm 10\%$  10W.  
 R4 - 20  $\Omega \pm 5\%$  10W.  
 R5 & R6 - 24  $\Omega \pm 5\%$  10W.  
 R8 & R9 - 15  $\Omega \pm 5\%$  10W.  
 R10 - 9  $\Omega \pm 5\%$  5W OR MORE.  
 R11, R12, R13 & R7 - 12  $\Omega \pm 5\%$  10W.  
 R14 & R15 - 15  $\Omega \pm 5\%$  10W.  
 R16 - 6.2  $\Omega \pm 5\%$  10W.  
 R17 - 3.9  $\Omega \pm 5\%$  5W OR GREATER.  
 R18 - 15  $\Omega \pm 5\%$  5W OR GREATER.  
 R19 - 6.2  $\pm 5\%$  5W OR GREATER.  
 S1A & S1B - BI-AMP, DOUBLE POLE DOUBLE THROW, 1A OR GREATER.  
 S2 - UHF SWITCH ON/OFF TOGGLE, 1A

NOTES: (UNLESS OTHERWISE SPECIFIED)

4		3		2		1			
		REVISIONS							
		CHG	LTR	DESCRIPTION		DRFT	CHK	DATE	APPR
		F-0699	A	RELEASE 71559		7/19/89	528	7-19-89	LEE GF



- RED & BLK 5-WAY TERMINALS TO HAVE GOLD PLATED INTERNALS.
- SPEAKER LEADS TO BE ENGINEERING APPROVED MONSTER CABLE.
- ⊕ INDICATES OUTWARD CONE MOTION WHEN POSITIVE VOLTAGE IS APPLIED TO THE RED INPUT TERMINAL.

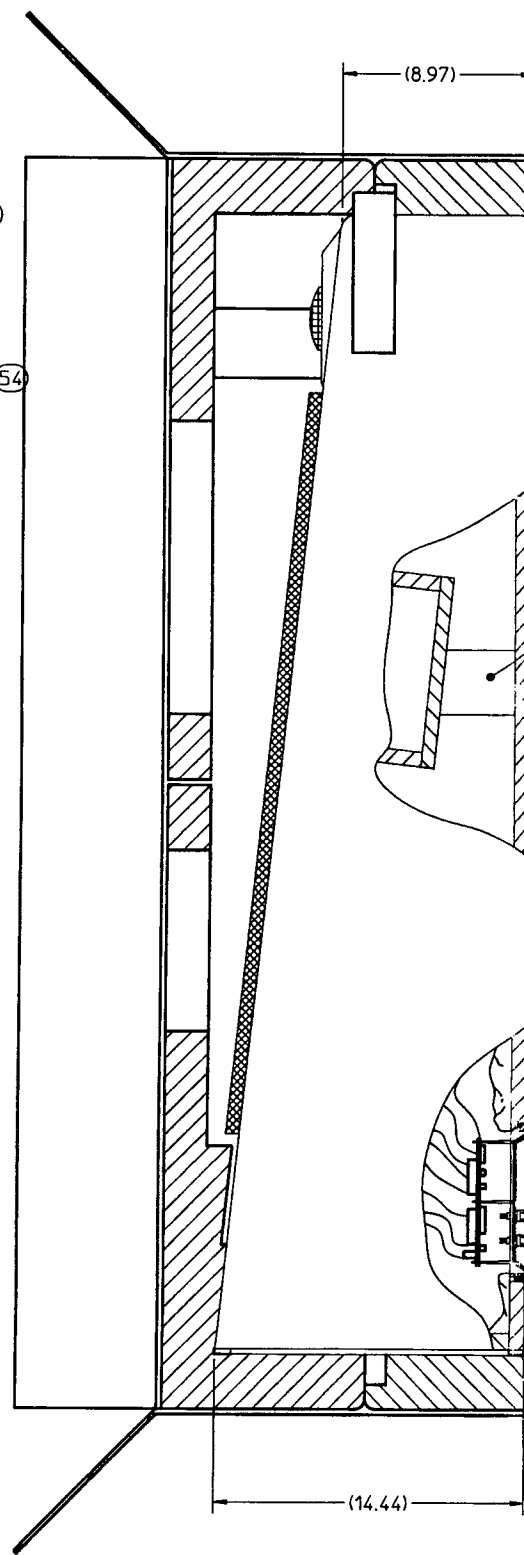
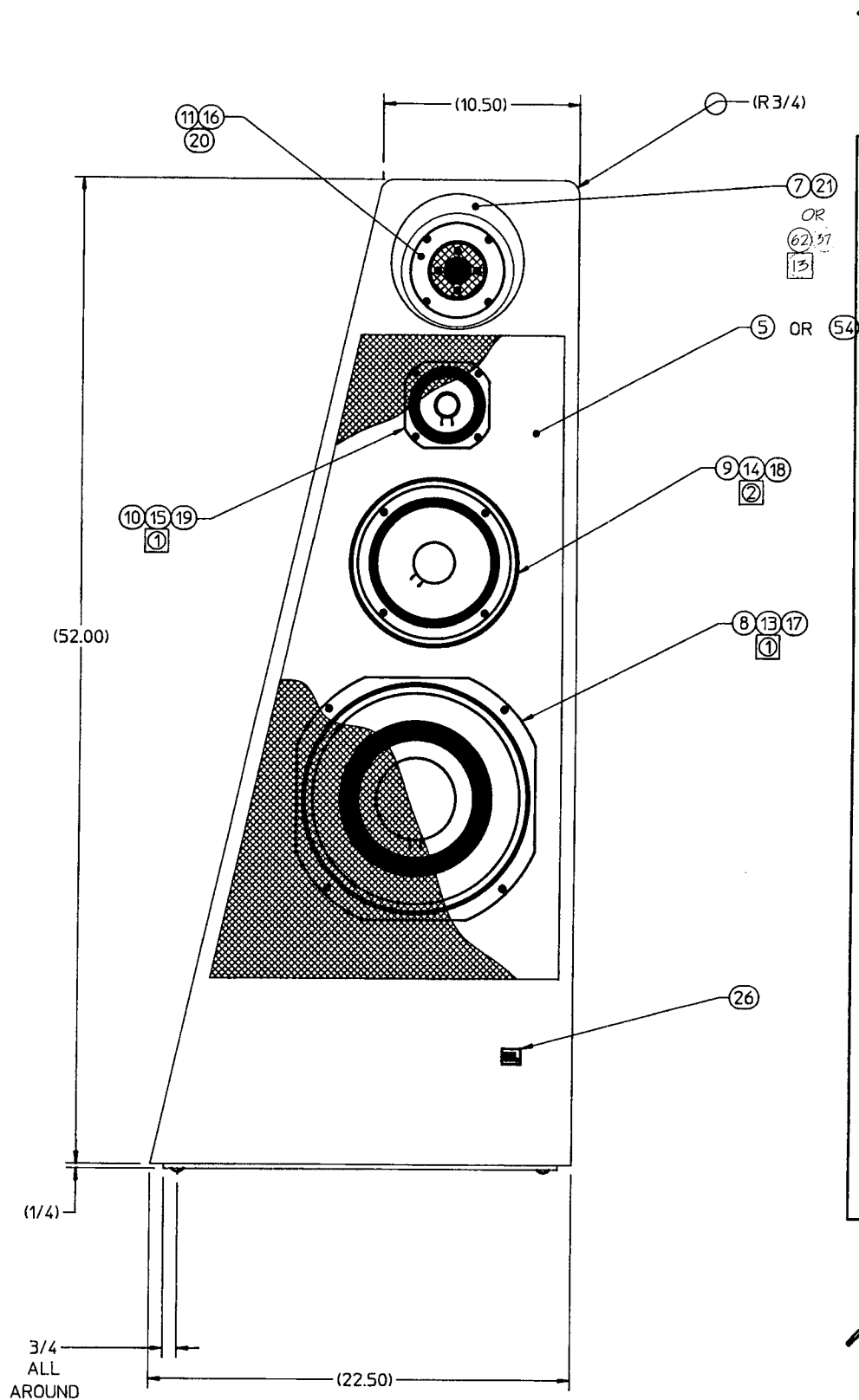
NOTES :

GRN	BARE TINNED END	24"	FROM SAME EDGE OF NETWORK BOARD
GRN/BLK	BARE TINNED END	24"	
WHT	BARE TINNED END	36"	
WHT/BLK	BARE TINNED END	36"	FROM TOP EDGE OF NETWORK BOARD
YEL	MALE .250 LUG	46"	
YEL/BLK	FEMALE .250 LUG	46"	
ORN	MALE .250 LUG	48"	
ORN/BLK	FEMALE .250 LUG	48"	

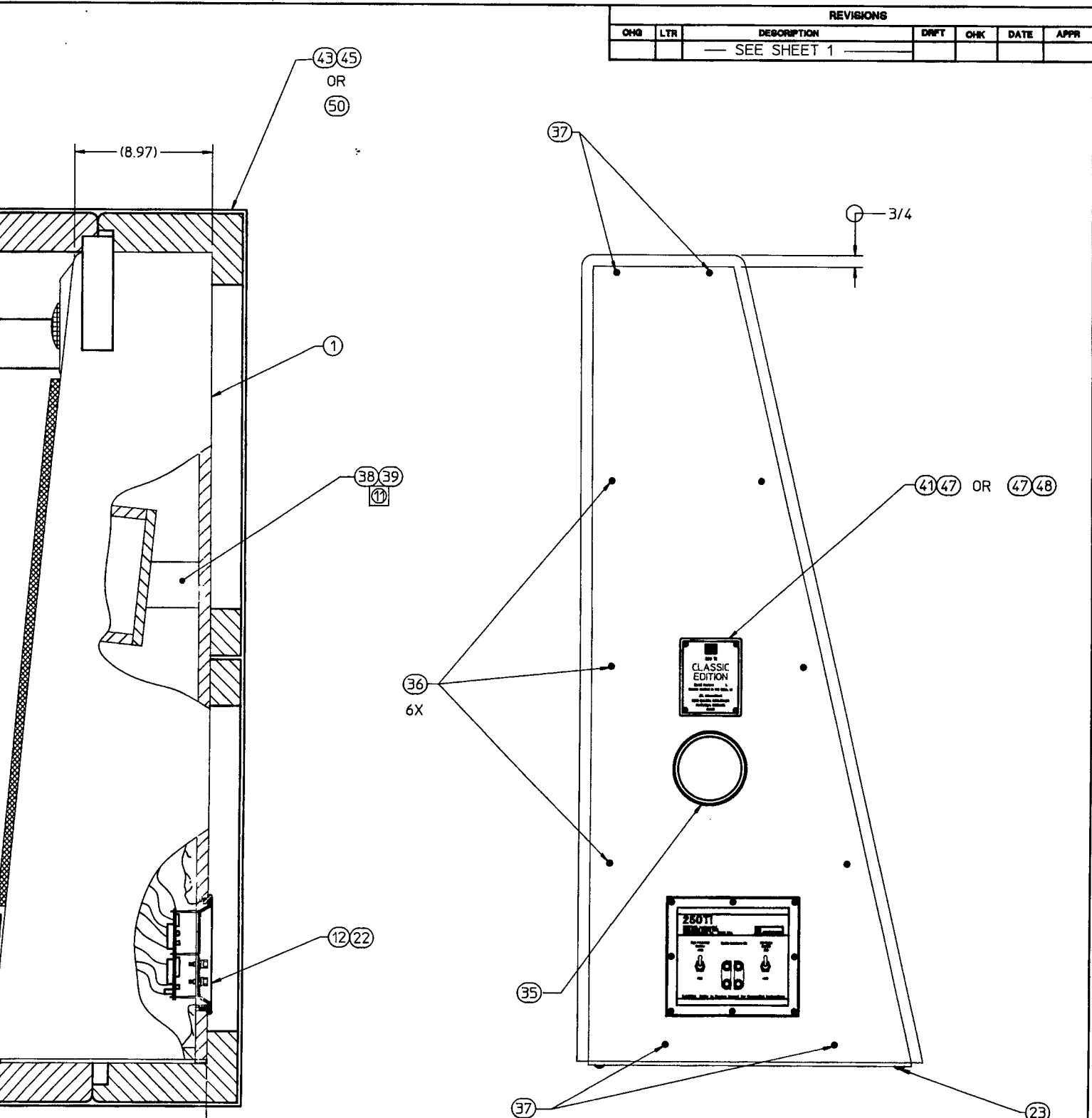
E.  
 5% 10 W.  
 /.  
 GREATER.  
 GREATER.  
 EATER.  
 E POLE DOUBLE THROW TOGGLE, 5A OR  
 TOGGLE, 1A

ITEM	PART NO.	DESCRIPTION	QTY	REMARKS
BILL OF MATERIAL				
UNLESS OTHERWISE SPECIFIED DIMENSIONS ARE IN INCH-SIZES BREAK SHARP EDGES .018 inch		MATERIAL —	DRAWN MHE 7-5-89 7-18-89	JBL Incorporated A Harman International Company Northridge, California 91328 U.S.A.
TOLERANCES (UNLESS OTHERWISE SPECIFIED) ANGULAR		FINISH	CHECKED J.R. 7-19-89 REVISION 1-A.	
X.XXX ± .005 inch ± _____		MODELS USED ON		TITLE NETWORK ASSY
X.XX ± .010 inch		250TI		SIZE D
X.X ± .020 inch		LACQUER		
FRACTIONAL DIMENSIONS: ± 1/32		ENGR 7-19-89 Ginger, J. 7-19-89 APPS 7-19-89		DRAWING NO. 71559
ALL DIMENSIONS ARE FINISHED DIMENSIONS DO NOT SCALE DRAWING		SCALE NONE		REV A
		SHEET 1 OF 2		

THESE DRAWINGS AND SPECIFICATIONS ARE THE PROPERTY OF HARMAN SPEAKERS MANUFACTURING. THEY ARE ISSUED IN STRICT CONFIDENCE AND SHALL NOT BE REPRODUCED, COPIED OR USED AS THE BASIS FOR MANUFACTURE OR SALE OF APPARATUS WITHOUT WRITTEN PERMISSION.



NOTES: UNLESS OTHERWISE SPECIFIED



REVISIONS						
CHG	LTR	DESCRIPTION	DWFT	CHK	DATE	APPR
		SEE SHEET 1				

ITEM	PART NO.	DESCRIPTION	REMARKS
BILL OF MATERIAL			
UNLESS OTHERWISE SPECIFIED DIMENSIONS ARE IN INCHES BREAK SHARP EDGES .016 INCH TOLERANCES UNLESS OTHERWISE SPECIFIED INCHES X.XXX ± .005 INCH X.XX ± .010 INCH X.X ± .020 INCH FRACTIONAL DIMENSIONS ± 1/32 ANGULAR ± ALL DIMENSIONS ARE FINISHED DIMENSIONS DO NOT SCALE DRAWING		DRAWN BY _____ DATE _____ P.L./CHECKED _____ DATE _____ ENGR _____ DATE _____ MODELS USED ON _____	<b>HARMAN SPEAKER MANUFACTURING</b> A Harman International Company Northridge, California 91329, U.S.A. TITLE <b>SALES MODEL 250Ti LACQUER</b> SIZE <b>D</b> DRAWING NO. <b>71557-XX</b> REV <b>H</b> SCALE 1/4 SHEET 2 OF 2

LOOSE

THESE DRAWINGS AND SPECIFICATIONS ARE THE PROPERTY OF HARMAN INTERNATIONAL MANUFACTURING. THEY ARE ISSUED IN STRICT CONFIDENCE AND SHALL NOT BE REPRODUCED, COPIED, OR USED AS THE BASIS FOR MANUFACTURE OR SALE OF APPARATUS WITHOUT WRITTEN PERMISSION.

PART NO.	REV	DESCRIPTION	REMARKS
71557-01	F	SALES MODEL, 250TIBQL	SHOWN (5) (7)
71557-02	F	SALES MODEL, 250TIBQR	OPPOSITE (5) (7)
71557-03	E	SALES MODEL, 250TIWQL	SHOWN (6) (8)
71557-04	E	SALES MODEL, 250TIWQR	OPPOSITE (6) (8)
71557-05	A	SALES MODEL, 250TIBQLC	SHOWN (5) (7)
71557-06	A	SALES MODEL, 250TIBQRC	OPPOSITE (5) (7)

1	1	1	1	1	1	62	334557-001	BEZEL	
1	1	1	1	1	1	61	72249-1219	LABEL, BRCD 250TIBQRC	
1	1	1	1	1	1	60	72249-1218	LABEL, BRCD 250TIBQLC	
1	1	1	1	1	1	59	72249-1084	LABEL, BRCD 250TIWQR	
1	1	1	1	1	1	58	72249-1083	LABEL, BRCD 250TIWQL	
1	1	1	1	1	1	57	72249-1082	LABEL, BRCD 250TIBQR	
1	1	1	1	1	1	56	72249-1081	LABEL, BRCD 250TIBQL	
1	1	1	1	1	1	55	74535-02	GRILLE, 250TIBQRC	
1	1	1	1	1	1	54	74535-01	GRILLE, 250TIBQLC	
1	1	1	1	1	1	53	68669-05	TWEETER, 035TIA-2	
1	1	1	1	1	1	52	74554	NETWORK, 250Ti "CLASSIC"	
1	1	1	1	1	1	51	71560-08	SHIPPING ASSY, 250TIBQRC	
1	1	1	1	1	1	50	71560-07	SHIPPING ASSY, 250TIBQLC	
1	1	1	1	1	1	49	74531-02	FOILCAL, REAR 250TIBQRC	
1	1	1	1	1	1	48	74531-01	FOILCAL, REAR 250TIBQLC	
4	4	4	4	4	4	47	71616	SCREW: #6 X 5/8 RDHDPH	
1	1	1	1	1	1	46	71560-04	SHIPPING ASSY, 250TIWQR	
1	1	1	1	1	1	45	71560-03	SHIPPING ASSY, 250TIWQL	
1	1	1	1	1	1	44	71560-02	SHIPPING ASSY, 250TIBQR	
1	1	1	1	1	1	43	71560-01	SHIPPING ASSY, 250TIBQL	
1	1	1	1	1	1	42	71561-02	FOILCAL, RIGHT SIDE	
1	1	1	1	1	1	41	71561-01	FOILCAL, LEFT SIDE	
1	1	1	1	1	1	40	20168S	ADHESIVE, WHITE GLUE	
001									
-06	-05	-04	-03	-02	-01	ITEM	PART NO.	DESCRIPTION	REMARKS
QUANTITY PER ASSEMBLY							BILL OF MATERIAL		

12. SIDE VIEW SHOWN PACKAGED IN SHIPPING ASSY.
- ⑪ HOT MELT STIFFENER (ITEM 38) IN PLACE, APPROXIMATELY CENTERED ON MID-RANGE COMPARTMENT.
10. USE ITEM 40 TO SEAL REAR PANEL IN PLACE.
9. STAMP SERIAL NO. ON CARTON, 2PL.
- ⑧ PAINT REAR PANEL WITH ITEM 33 (WHITE PAINT).
- ⑦ PAINT REAR PANEL WITH ITEM 32 (BLACK PAINT).
- ⑥ PAINT EXTERIOR OF CABINET (EXCEPT REAR & BOTTOM PANELS) WITH ITEM 31 (WHITE LACQUER).
- ⑤ PAINT EXTERIOR OF CABINET (EXCEPT REAR & BOTTOM PANELS) WITH ITEM 30 (BLACK LACQUER).
4. LOCATE FOILCAL (ITEMS 41 & 42) OR (ITEMS 48 & 49) 1" ABOVE PORT TUBE, ON SAME CENTERLINE AS PORT TUBE.
3. SEAL MID-RANGE COMPARTMENT HOLE WITH ITEM 29.
- ② ORIENT ITEM 9 WITH VOICE COIL LEADS POSTIONED TOWARD ANGLED SIDE OF CABINET AS SHOWN.
- ① ORIENT ITEMS 8 & 10 WITH BRUSH GRAIN HORIZONTAL, VOICE COIL LEADS ORIENTED TOWARD BOTTOM.
- ⑬ ATTACH -05 AND -06 BEZEL ITEM 62 WITH ITEM 37.

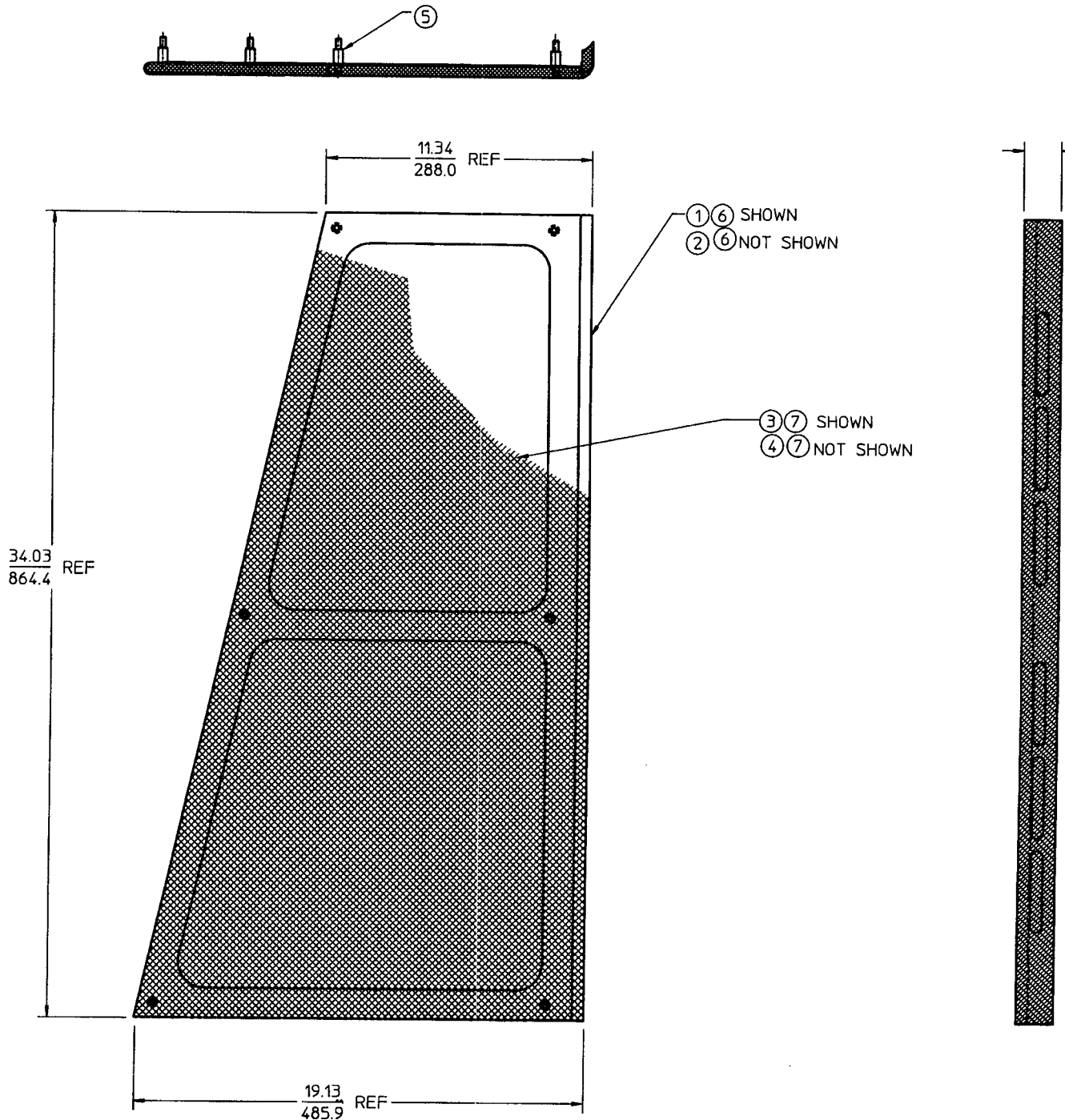
NOTES UNLESS OTHERWISE SPECIFIED



		.017	39	66724	HOT MELT	
RC		1 1 1 1 1 1	38	62843	STIFFENER, SUB-ENCLOSURE	
LC		B B 4 4 4 4	37	22372	SCREW: #8 X 1 1/2, FLHDPH,BLK	
R		6 6 6 6 6 6	36	61577	SCREW: #8 X 2, FLHDPH, BLK	
L		1 1 1 1 1 1	35	70515-07	PORT TUBE	
R		6 6 6 6 6 6	34	65840	GRILLE RETAINER	
L		— 5.5347 —	33	71031-04	PAINT, WHITE, LOW GLOSS	
		5.5347 — 5.5347	32	71031-03	PAINT, BLACK, LOW GLOSS	
		— 22.6 —	31	71031-02	FINISH, WHITE LACQUER	
SSIC'		22.6 — 22.6	30	71031-01	FINISH, BLACK LACQUER	
BORC		.2	29	63062	STRIP CAULK	
BQLC		1 1 1 1 1 1	28	71074	TERMINAL WRENCH	
ORC		1 1 1 1 1 1	27	71317	GLOVES	
QLC		1 1 1 1 1 1	26	48003-02	LOGO, JBL	
DPH		— — — 1 — 1	25	65424-02	OWNERS MANUAL, 250Ti LIMITED EDITION	
WOR		— 1 — — — 1	24	65424-03	OWNERS MANUAL, 250TI CLASSIC	
WOL		4 4 4 4 4 4	23	20305S	GLIDES	
BQR		8 8 8 8 8 8	22	59460	SCREW: #8 X 3/4, FLHDPH, BLK	MOUNTING NETWORK
BQL		— — 3 3 3 3	21	22369	SCREW: #8 X 1, FLHDPH, BLK	MOUNTING BEZEL
		4 4 4 4 4 4	20	71833	SCREW: #8-32 X 1/2, FLHDPH, BLK	MOUNTING TWEETER
		4 4 4 4 4 4	19	12704	SCREW: #6-32 X 1, FLHDPH, BLK	MOUNTING MID-RANGE
E		4 4 4 4 4 4	18	33841	SCREW: #10-32 X 1, FILHDPH, BLK	MOUNTING MID-WOOFER
	REMARKS	4 4 4 4 4 4	17	21847	SCREW: #10-32 X 1, FLHDPH, BLK	MOUNTING WOOFER
		1 1 1 1 1 1	16	66553	GASKET, .035TiA-1	
		1 1 1 1 1 1	15	21771	GASKET, 104H	
		1 1 1 1 1 1	14	52671	GASKET, 108H	
		1 1 1 1 1 1	13	20253	GASKET, LE14H-1	
		— — 1 1 1 1	12	71559	NETWORK, 250Ti LACQUER	
		— — 1 1 1 1	11	68669-04P	TWEETER, .035TiA-1	
		1 1 1 1 1 1	10	65180P	MID-RANGE, 104H	
		1 1 1 1 1 1	9	62526-01P	MID-WOOFER, 108H	
		1 1 1 1 1 1	8	59605-02P	WOOFER, LE14H-1	
		— — 1 1 1 1	7	71567P	BEZEL	
		— — 1 — 1 —	6	65421-04	GRILLE, RIGHT	
		— — 1 — 1 —	5	65421-03	GRILLE, LEFT	
		— 1 — 1 — 1	4	50777	LOW POWER TECHNICAL NOTE	
		— 1 — 1 — 1	3	50630	LITERATURE ENVELOPE	
		1 — 1 — 1 —	2	71558-02	MFD ITEM, 250TiBQR (NO PAINT)	
		— 1 — 1 — 1	1	71558-01	MFD ITEM, 250TiBQL (NO PAINT)	
-06 -05 -04 -03 -02 -01	ITEM PART NO.	DESCRIPTION	REMARKS			
QUANTITY PER ASSEMBLY	BILL OF MATERIAL					
UNLESS OTHERWISE SPECIFIED DIMENSIONS ARE IN INCHES TOLERANCES UNLESS OTHERWISE SPECIFIED X.XXX ± .005 INCH X.XX ± .010 INCH X.X ± .020 INCH  FRACTIONAL DIMENSIONS = VSI ANGULAR = ALL DIMENSIONS ARE FINISHED DIMENSIONS DO NOT SCALE DRAWING		DRAWN BY S.POWELL DATE 2/10/92 ME/CHECKED M. Brown DATE 3/6/92 DESIGNED Greg Smith DATE 3-5-92 MODELS USED ON	DATE 2/10/92 DATE 3/6/92 DATE 3-5-92	HARMAN SPEAKER MANUFACTURING A Harman International Company Northridge, California 91329, U.S.A. TITLE SALES MODEL 250Ti LACQUER		
		SIZE D	DRAWING NO. 71557-XX	SHEET 1	REV H	OF 2

THESE DRAWINGS AND SPECIFICATIONS ARE THE PROPERTY OF HARMAN INTERNATIONAL COMPANY. THEY ARE ISSUED IN STRICT CONFIDENCE AND SHALL NOT BE REPRODUCED, COPIED, OR USED AS THE BASIS FOR MANUFACTURE OR SALE OF APPARATUS WITHOUT WRITTEN PERMISSION.

PART NO.	REV	DESCRIPTION	REMARKS
74535-01	A	GRILLE-ASSY, FINISH LEFT H.	AS SHOWN
74535-02	A	GRILLE-ASSY, FINISH RIGHT H.	NOT SHOWN



DIM. ARE INCHES/mm, mm FOR REF ONLY.

NOTES: UNLESS OTHERWISE SPECIFIED

REVISIONS							
CHG	LTR	DESCRIPTION	DFT	CHK	DATE	APP	
366R	B	REPLACE PINK CARD FOR -01 & -02	HF	/	04.15.92	GT	110

1.55  
39.5 REF

.005	.005	7	20962S	ADHESIVE, CONTACT-GRILLE	
.004	.004	6	41142S	STAIN BLK CONTACT	
6	6	5	65961	GRILLE PIN	
1	-	4	74735-02	GRILLE CLOTH, RIGHT H.	
-	1	3	74735-01	GRILLE CLOTH, LEFT H.	
1	-	2	74535-0299	GRILLE-SUBASSY, W/RADIUS RIGHT HAND	
-	1	1	74535-0199	GRILLE-SUBASSY, W/RADIUS LEFT HAND	
-02	-01	ITEM	PART NO.	DESCRIPTION	REMARKS

DOCUPLEX

QTY		BILL OF MATERIAL													
<small>UNLESS OTHERWISE SPECIFIED DIMENSIONS ARE IN INCH-SIZES BREAK SHARP EDGES .016 INCH TOLERANCES UNLESS OTHERWISE SPECIFIED INCHES X.XXX ± .005 INCH X.XX ± .010 INCH X.X ± .020 INCH FRACTIONAL DIMENSIONS ± 1/32 ANGULAR ± ALL DIMENSIONS ARE FINISHED DIMENSIONS DO NOT SCALE DRAWING</small>		<table border="1" style="width: 100%;"> <tr> <td>DRAWN BY H.FELOSIEDT</td> <td>DATE 4/13/92</td> </tr> <tr> <td>CHK/CHECKED <i>[Signature]</i></td> <td>DATE 04.15.92</td> </tr> <tr> <td>ENGR <i>[Signature]</i></td> <td>DATE 4-15-92</td> </tr> <tr> <td colspan="2">MODELS USED ON</td> </tr> <tr> <td colspan="2">250TIBQLC</td> </tr> <tr> <td colspan="2">250TIBQRC</td> </tr> </table>		DRAWN BY H.FELOSIEDT	DATE 4/13/92	CHK/CHECKED <i>[Signature]</i>	DATE 04.15.92	ENGR <i>[Signature]</i>	DATE 4-15-92	MODELS USED ON		250TIBQLC		250TIBQRC	
DRAWN BY H.FELOSIEDT	DATE 4/13/92														
CHK/CHECKED <i>[Signature]</i>	DATE 04.15.92														
ENGR <i>[Signature]</i>	DATE 4-15-92														
MODELS USED ON															
250TIBQLC															
250TIBQRC															
		<table border="1" style="width: 100%;"> <tr> <td colspan="2">HARMAN SPEAKER MANUFACTURING A Harman International Company Northridge, California 91329, U.S.A.</td> </tr> <tr> <td>TITLE GRILLE-ASSY, FINISH</td> <td>REV B</td> </tr> </table>		HARMAN SPEAKER MANUFACTURING A Harman International Company Northridge, California 91329, U.S.A.		TITLE GRILLE-ASSY, FINISH	REV B								
HARMAN SPEAKER MANUFACTURING A Harman International Company Northridge, California 91329, U.S.A.															
TITLE GRILLE-ASSY, FINISH	REV B														
		<table border="1" style="width: 100%;"> <tr> <td>SIZE D</td> <td>DRAWING NO. 74535-XX</td> </tr> <tr> <td>SCALE: 1/3</td> <td>SHEET 1 OF 1</td> </tr> </table>		SIZE D	DRAWING NO. 74535-XX	SCALE: 1/3	SHEET 1 OF 1								
SIZE D	DRAWING NO. 74535-XX														
SCALE: 1/3	SHEET 1 OF 1														

8

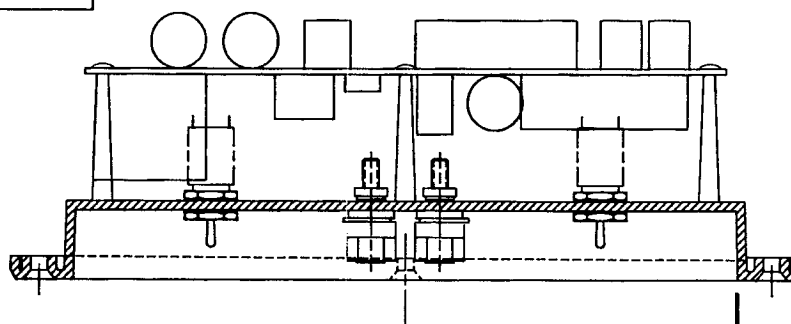
7

6

5

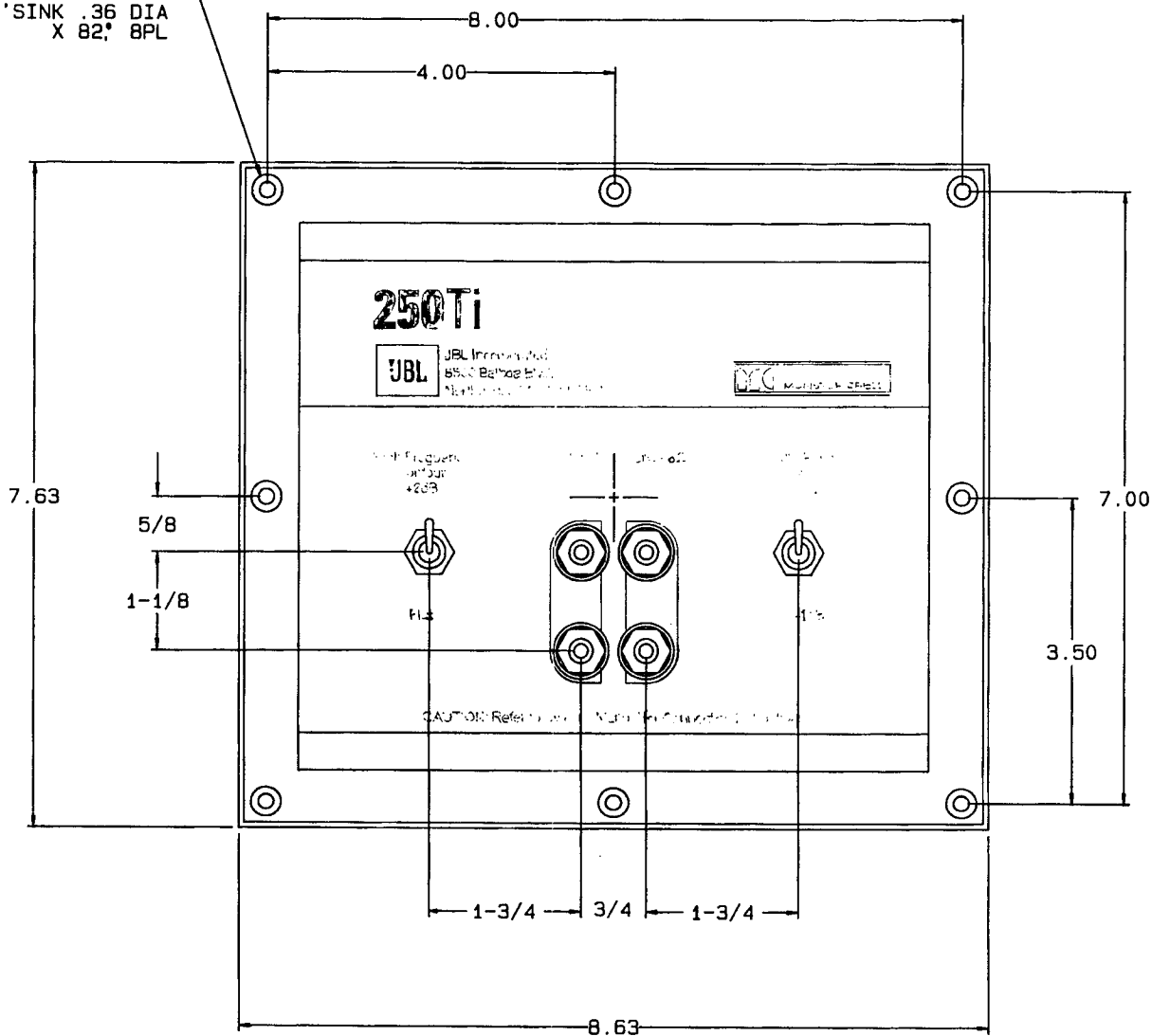


THESE DRAWINGS AND SPECIFICATIONS ARE THE PROPERTY OF JBL Incorporated. THEY ARE ISSUED IN STRICT CONFIDENCE AND SHALL NOT BE REPRODUCED, COPIED, OR USED AS THE BASIS FOR MANUFACTURE OR SALE OF APPARATUS WITHOUT WRITTEN PERMISSION.



1.5° SIDE DRAFT  
TYP

.18 DIA THRU  
C-SINK .36 DIA  
X 82° 8PL



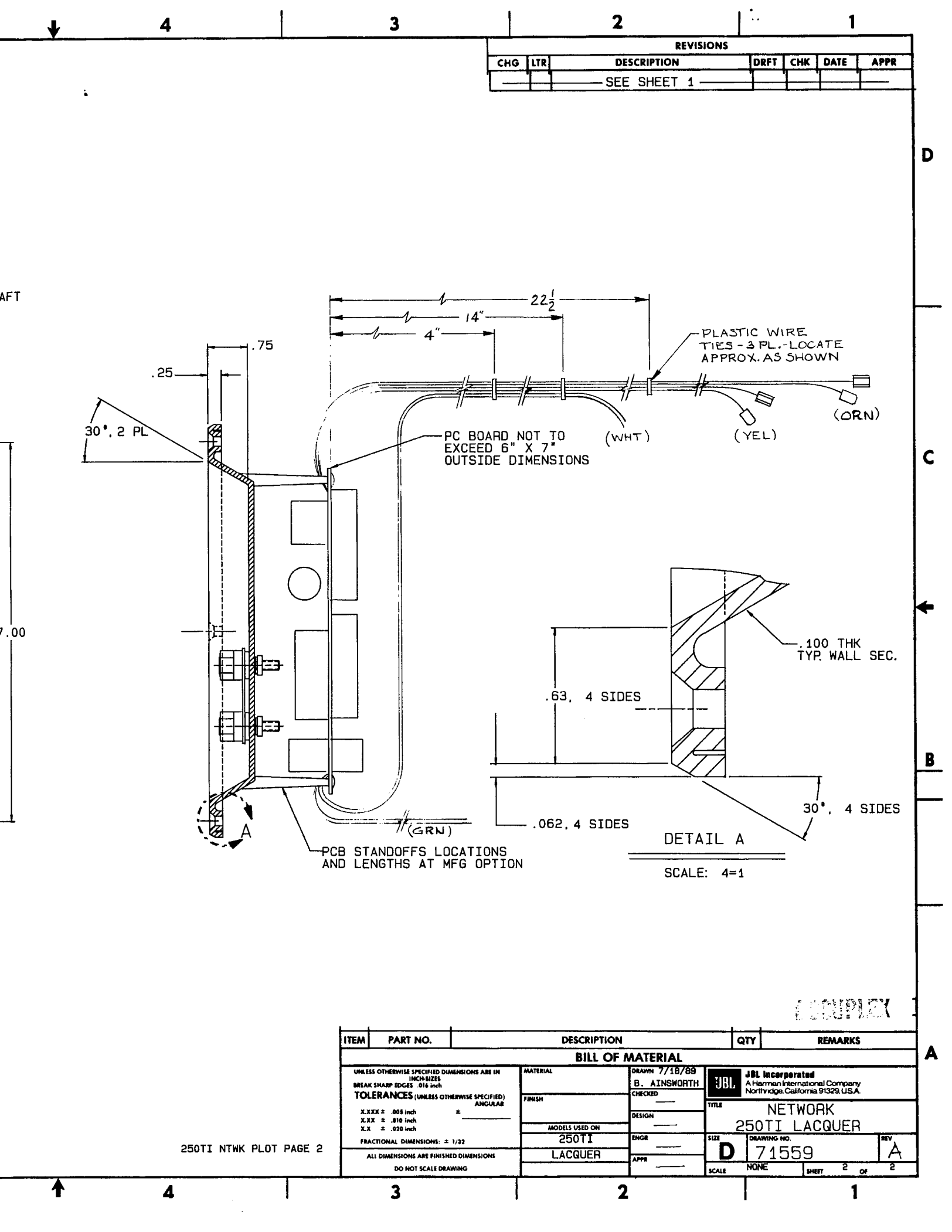
NOTES: (UNLESS OTHERWISE SPECIFIED)

7

6

5





Procedure: ECC-R-08 - Account: ECC-NMG54

Effectivity Date : 10-23-98

## 250TIBQL - 250TI BLK LACQUER LH

Level	X	Part Number	PC	Description	Rev	Quantity	U/M	MB	ECO	ECO Date	Strt Use	End Use	LdTm	PkOp	*
0		X 250TIBQL	0	250TI BLK LACQUER LH	D	1.0000	EA	M					2		
1		P 71557-01	UN	S/M,250TIBQL	F	1.0000	EA	M					0	995	
2		X 71558-01	RA	MFD ITEM,250TI LH	E	1.0000	EA	M					0	995	
3		X 71562-03	HL	BAFFLE LH,250LAQUER	A	1.0000	EA	M					3	10	
4		58524-06	WR	3/4X61X109,FIBERBRD	A	9.0000	SF	B	14638	04-08-94	04-08-94		56	10	
3		X 71563-01	HL	REAR PNL LH,250LACQU	B	1.0000	EA	M					3	10	
4		58524-06	WR	3/4X61X109,FIBERBRD	A	9.0000	SF	B	14638	04-08-94	04-08-94		56	10	
3		X 71564-01	HL	SIDE VER LH,250 LAC	B	1.0000	EA	M					3	10	
4		58524-06	WR	3/4X61X109,FIBERBRD	A	5.6250	SF	B	14638	04-08-94	04-08-94		56	10	
3		X 71565-01	HL	SIDE 13DEG LH,250LAC	B	1.0000	EA	M					3	10	
4		58524-06	WR	3/4X61X109,FIBERBRD	A	5.6250	SF	B	14638	04-08-94	04-08-94		56	10	
3		X 71566-01	HL	TOP PNL LH,250 LAC	B	1.0000	EA	M					3	10	
4		58524-06	WR	3/4X61X109,FIBERBRD	A	0.8000	SF	B	14638	04-08-94	04-08-94		56	10	
3		X 71578-01	HL	BOT PNL,LEFT 250 LAC	B	1.0000	EA	M					3	10	
4		58524-06	WR	3/4X61X109,FIBERBRD	A	2.2500	SF	B	14638	04-08-94	04-08-94		56	10	
3		X 62840	HL	SUB-ENC, TOP C250	B	1.0000	EA	M					3	10	
4		20889-24	WP	5/8X5X12,P/B U/F	A	0.5130	SF	B	14049	09-08-93	09-08-93		10	10	
3		X 62840-01	HL	SUB-ENC,BOT C250	A	1.0000	EA	M					3	10	
4		20889-24	WP	5/8X5X12,P/B U/F	A	0.5130	SF	B	14049	09-08-93	09-08-93		10	10	
3		X 62841	HL	SUB-ENCL,SIDE C250	A	2.0000	EA	M					3	10	
4		20889-24	WP	5/8X5X12,P/B U/F	A	0.7892	SF	B	14049	09-08-93	09-08-93		10	10	
3		X 62842	HL	SUB-ENCL,BACK C250	A	1.0000	EA	M					3	10	
4		20889-24	WP	5/8X5X12,P/B U/F	A	0.7696	SF	B	14049	09-08-93	09-08-93		10	10	
3		P 47224-166		SOUND PAD, 12 X 20	A	1.0000	EA	M	218M	08-25-89	08-25-89		0	10	
4		22389P	0	1"THK.FIBERGLASS	D	1.6667	SF	B					14	10	
3		X 63060-01	HL	STIF,SIDE LOWER C250	B	3.0000	EA	M					3	10	
4		53147P	WN	DUGFR 1X3XR/L #1 COM	D	3.1596	LF	B					14	10	
3		X 63060-02	HL	STIF,SIDE CENTR C250	A	2.0000	EA	M					3	10	
4		53147P	WN	DUGFR 1X3XR/L #1 COM	D	1.8518	LF	B					14	10	
3		X 63060-03	HL	STIF,SIDE UPPER C250	A	2.0000	EA	M					3	10	
4		53147P	WN	DUGFR 1X3XR/L #1 COM	D	1.5972	LF	B					14	10	
3		56144	RA	PORT TUBE 5.31IDX4.0	KX	1.0000	EA	B					28	10	
3		X 56145	HL	PLUG VARIOUS MODELS		1.0000	EA	M					3	10	
4		31329-06	WR	PB BLK FL 3/4X61X109	C	0.2200	SF	B	14638	04-08-94	04-08-94		56	10	
3		X 62844	HL	CLEAT,PNL TOP C250	C	1.0000	EA	M					3	10	
4		55833P	WN	SHOP PNE 3/4X3/4XR/L	A	0.8481	LF	B					21	10	
3		X 62845	HL	CLEAT PN VERT S L250	A	1.0000	EA	M					3	10	
4		55833P	WN	SHOP PNE 3/4X3/4XR/L	A	4.6296	LF	B					21	10	
3		X 62846	HL	CLEAT,PNL 13DEG C250	B	1.0000	EA	M					3	10	
4		55833P	WN	SHOP PNE 3/4X3/4XR/L	A	4.6407	LF	B					21	10	
3		X 62847	HL	CLEAT,BOTM/BACK C250	A	1.0000	EA	M					3	10	
4		55833P	WN	SHOP PNE 3/4X3/4XR/L	A	1.9259	LF	B					21	10	
3		X 62964	HL	CLEAT,BOT VERT C250	B	1.0000	EA	M					3	10	
4		55833P	WN	SHOP PNE 3/4X3/4XR/L	A	1.0463	LF	B					21	10	
3		X 62965	HL	CLEAT,BOT 13DEG C250	C	1.0000	EA	M					3	10	
4		55833P	WN	SHOP PNE 3/4X3/4XR/L	A	1.0463	LF	B					21	10	
3		X 62968-01	HL	CLEAT,BOT/FRNT,C250L	A	1.0000	EA	M					3	10	
4		55833P	WN	SHOP PNE 3/4X3/4XR/L	A	1.9664	LF	B					21	10	
3		P 62848		PAD,SND SIDE C250	A	2.0000	EA	M					0	10	
4		22389P	0	1"THK.FIBERGLASS	D	9.2000	SF	B	494P	07-19-91	07-19-91		14	10	
3		P 71640		SOUND PAD,REAR PANEL	A	1.0000	EA	M	218M	08-25-89	08-25-89		0	10	
4		22389P	0	1"THK.FIBERGLASS	D	4.0000	SF	B					14	10	
3		P 53189		SOUND PADDING FIBRGL	C	1.0000	EA	M					0	10	

## 250TIBQL - 250TI BLK LACQUER LH

Level	X	Part Number	PC	Description	Rev	Quantity	U/M	MB	ECO	ECO Date	Strt Use	End Use	LdTm	PkOp	*
4		22389P	0	1"THK.FIBERGLASS	D	1.7180	SF	B	494P	07-19-91	07-19-91		14	10	
3	P	57197		SOUND PADDING FIBRGL	B	1.0000	EA	M					0	10	
4		22389P	0	1"THK.FIBERGLASS	D	0.8333	SF	B					14	10	
3		59931S	0	NAIL,SPOT.3/16x1-1/8	%	80.0000	EA	B					21	10	
3		20168S	L*	ADH-WHT GLUE	B	0.0500	GL	B					7	10	
3		66730	LH	ADH,HOT MELT,DIP	A	0.0100	LB	B					35	10	
3	X	63974	HL	CORNER BLOCK L250	B	2.0000	EA	M					3	10	
4		55833P	WN	SHOP PNE 3/4X3/4XR/L	A	0.3334	LF	B					21	10	
3		22370	RB	#8X2 PH FL HD WD SCR	D	14.0000	EA	B					35	10	
3	X	52073	HL	CLEAT, .75X.75X10.31	A	2.0000	EA	M	218M	08-25-89	08-25-89		3	10	
4		55833P	WN	SHOP PNE 3/4X3/4XR/L	A	1.7186	LF	B					21	10	
3	X	62580	HL	CLEAT FR HORIZ 2506		1.0000	EA	M					3	10	
4		55833P	WN	SHOP PNE 3/4X3/4XR/L	A	0.9740	LF	B					21	10	
3	X	60617	HL	PORT CLEAT,12" 4560		2.0000	EA	M					3	10	
4		55833P	WN	SHOP PNE 3/4X3/4XR/L	A	2.0000	LF	B					21	10	
3	P	47224-84		SOUND PADDING FIBRGL	B	1.0000	EA	M	218M	08-25-89	08-25-89		0	10	
4		22389P	0	1"THK.FIBERGLASS	D	0.3542	SF	B					14	10	
3	X	59854	HL	CLEAT 4530BK		1.0000	EA	M					3	10	
4		55833P	WN	SHOP PNE 3/4X3/4XR/L	A	1.0833	LF	B					21	10	
3		62784	WN	GLUE BLOCK 3/4SQX2"L	C	2.0000	EA	B					28	10	
3	X	71603	HL	CLEAT,6DEG ANG SIDE	A	1.0000	EA	M					3	10	
4		55833P	WN	SHOP PNE 3/4X3/4XR/L	A	0.6042	LF	B					21	10	
3		61861	Z	T-NUT,10-32	A	8.0000	EA	B					42	10	
3		61859	RA	T-NUT 6-32X11/32	A	4.0000	EA	B					42	10	
3	X	71584	HL	BASE PNL,250TI LAC	A	1.0000	EA	M					3	10	
4		60238	WN	UNTEMP HB 1/4X48X96		2.2857	SF	B					21	10	
3		67375	RT	#8X1-1/4,FLT,PH,PTBD	B	2.0000	EA	B					35	10	
3		39106S	0	NAIL,FINISHING 1"	A	22.0000	EA	B	20653	11-13-97	11-18-97		21		
2	P	71567P	M	BEZEL,ALUM 250TI LAC	A	1.0000	EA	M	263M	09-20-89	09-20-89		0	995	
3		71567	YM	BEZEL,ALUM 250TI LAC	A	1.0000	EA	B					15	10	
2	X	65421-03	A7	M/I, G250TIBKL	E	1.0000	EA	M					10	995	
3	P	303699-001		ADH,3M,FB2000	C	4.0470	SF	M	14420				0	995	
4		303699-003	L*	ACTIVATOR,3M,FB2000	A	0.0020	GL	B	19869	03-06-97	03-06-97		35		
4		303699-002	L*	ADH,3M,FB2000	A	0.0162	GL	B	20667	11-17-97	11-17-97		35		
3		65961	RA	GRILLE PIN		6.0000	EA	B					56	995	
3	P	62903-03	UN	GRILLE CLTH G250BKCL	A	1.0000	EA	M					0	995	
4		50504P	RB	GRILLE CLOTH-BLACK	A	5.3000	SF	B					56	995	
3	X	65460-01	H	GRILLE FRM 250TIL	C	1.0000	EA	M					3	995	
4		62286-06	W?	FB U/F 5/8X61X109	A	3.7500	SF	B					56	10	
3	P	334280-001		STAIN/ACETONE MIXTURE	C	0.0041	GA	M	20853	02-20-98	02-20-98				
4		31098S	L*	ACETONE O/P 1785 LBS	A	0.2624	OZ	B	21455	10-12-98	10-12-98		7		
4		41142S	L*	STAIN,BLK,CONTACT,E3	A	0.0020	GL	B	21455	10-12-98	10-12-98		21		
2	P	59605-02P		M/I LE14H-1 FOR FURN		1.0000	EA	M					0	995	
3	X	59605-02	2D	M/I,LE14H-1	C	1.0000	EA	M					2	10	
4	X	59642-02	M3	COV,MAG,THERMOPLSTC RBR	F	1.0000	EA	M					35	10	
5		LS1083		VYL,TEKNOR APEX,3174/75	A	0.0671	LB	B						10	
5		LS1085		REED,UN0055P,DEEP_BLK	A	0.0037	LB	B						10	
4	P	66596-01		MAGNET ASSY 4"	F	1.0000	EA	M					0	10	
5		66585-01	YM	BP/P EXT 7.750OD 1.0	D	1.0000	EA	B					2	10	
5	X	59867-0186	XP	DEBURRED,4"COND/RING	F	1.0000	EA	M					2	10	
6		59867-01	RT	COND RING 30540ID 3.	E	1.0000	EA	B					35	10	
5		59552-01	MI	T/P PLD 3.999ID (3VC	H	1.0000	EA	B					85	10	
5		66597-01	Y1	POLE PIECE 3.879OD 0	C	1.0000	EA	B					2	10	

Procedure: ECC-R-08 - Account: ECC-NMG54

Effectivity Date : 10-23-98

250TIBQL - 250TI BLK LACQUER LH

Level	X	Part Number	PC	Description	Rev	Quantity	U/M	MB	ECO	ECO Date	Strt Use	End Use	LdTm	PkOp	*
5		59548-01		RT MAG 4.600ID (3VC) 8.	G	1.0000	EA	B					84	10	
5		63507		L* ACTIVATOR, ACRYLIC	B	0.0160	OZ	B					42	10	
5		63506		L* ADHESIVE, ACRYLIC	B	0.1600	OZ	B					35	10	
4		50201		Z D/DOME 4.025/DIA 3.9	R	1.0000	EA	B					49	10	
4		57369-18		JR FOILCAL LE14H-1	A	1.0000	EA	B					70	10	
4		60925		RT FOAM PLUG	A	1.0000	EA	B					21	10	
4		29326S		L* BOSTIK BRN O/P 75GAL	B	0.0780	OZ	B					42	10	
4	P	21811		MOULDING 39 INCHES		1.0000	EA	M					0	10	
5		29942P		RA VINYL EXTRUSION	B	3.2750	LF	B					49	10	
4	P	62357		C/C ASSY LE14H-1 4IN	H	1.0000	EA	M					0	10	
5		52729S		L* ABELSTICK, O/P-300	B	0.0600	EA	B					28	10	
5		48839-01		OC VC ASSY 3.90ID .750	A	1.0000	EA	B					7	10	
5		58605		Z EYELET - USM SE33	A	2.0000	EA	B					42	10	
5		66180-115		Z TINSEL/PIGTAIL LEAD	B	2.0000	EA	B					56	10	
5		51164		0 SPIDER 7.0DIA 4"VCID	J	1.0000	EA	B					49	10	
5	P	29368-01S		BOSTIK DYED BLACK		0.0050	OZ	M	146M	10-24-89	10-24-89		0	10	
6		29368S		L* BOSTIK WHT O/P 50GAL	D	0.0050	OZ	B					42	10	
6		29454S		L1 DYE, BLUE O/P 1	B	0.0000	GL	B					28	10	
6		47417S		LB BLACK POWDER DYE		0.0000	LB	B					42	10	
5		29474S		LH SOLDER ROSIN O/P 50	A	0.0080	OZ	B	146M	10-24-89	10-24-89		28	10	
5		63628A		L* ACCELERATOR, HENKEL	A	0.0050	OZ	B	14120	04-25-94	04-25-94		15	10	
5		65336		L* BLK MAX ADHS/LOCTITE	A	0.0100	OZ	B	146M	10-24-89	10-24-89		35	10	
5	X	71581-01		XC CONE COMP 12.160DIA	A	1.0000	EA	M	146M	10-24-89	10-24-89		2	10	
6		71581		0 CONE COMP 12.160DIA	A	1.0000	EA	B					49	10	
6		62592		L* AQUAPLAS BLACK	A	0.1444	LB	B					28	10	
4		59631-01		Z SCREEN, BLACK	D	1.0000	EA	B					21	10	
4		58373		Z SCREW, 10-32X3/8 PAN	C	6.0000	EA	B					35	10	
4		20436S		LH SOLDER MULT O/P 250	A	0.0120	OZ	B					28	10	
4	P	29368-01S		BOSTIK DYED BLACK		0.0700	OZ	M					0	10	
5		29368S		L* BOSTIK WHT O/P 50GAL	D	0.0696	OZ	B					42	10	
5		29454S		L1 DYE, BLUE O/P 1	B	0.0000	GL	B					28	10	
5		47417S		LB BLACK POWDER DYE		0.0000	LB	B					42	10	
4		61443		AU SPACER TUBE MYLAR 4"	A	0.0100	EA	B					35	10	
4	P	70637-02		FRAME ASSY, LE14H-1	C	1.0000	EA	M					2	10	
5	X	70636-02		XP FRM, BRHSD/PNTD-LE14	B	1.0000	EA	M					2	10	
6	P	68303		FRAME DEBURRED 14"	C	1.0000	EA	M					0	10	
7		68303-0099		0 FRM 12.750OD 5.500ID	B	1.0000	EA	B					35	10	
5		68719		Z GSKT, TERM, DUAL	A	1.0000	EA	B					21	10	
5		323892-001		Z TERMINAL, DUAL	B	1.0000	EA	B	16710	12-08-95	04-01-96		141		
4		63627		L* ADH, C.A., SICO-MET	A	0.1050	OZ	B					42	10	
4		63628A		L* ACCELERATOR, HENKEL	A	0.0713	OZ	B					15	10	
4		63506		L* ADHESIVE, ACRYLIC	B	0.0400	OZ	B					35	10	
4		63507		L* ACTIVATOR, ACRYLIC	B	0.0040	OZ	B					42	10	
4		72266		L* ADH, SICO-MET, 5181	A	0.0375	OZ	B					42	10	
4	P	74822		LABEL, DATE CODE	A	1.0000	EA	M	20773	01-20-98	01-21-98		0		
5		75225		Z LABEL STOCK, 1.5"X.25	B	1.0000	EA	B					14	10	
5		72471		Z RIBBON, XFR, THRM, 4.5"x1180	A	0.5417	IN	B					21	10	
4	P	74822		LABEL, DATE CODE	A	1.0000	EA	M	20773	01-20-98	01-21-98		0		
5		75225		Z LABEL STOCK, 1.5"X.25	B	1.0000	EA	B					14	10	
5		72471		Z RIBBON, XFR, THRM, 4.5"x1180	A	0.5417	IN	B					21	10	
2	P	62526-01P		M/I 108H FOR FURN		1.0000	EA	M					0	995	
3	X	62526-01		2C M/I, 108H	S	1.0000	EA	M					2	10	
4	P	67182		MAGNET ASSY, 2118H	F	1.0000	EA	M			04-26-95		0	10	



Procedure: ECC-R-08 - Account: ECC-NMG54

Effectivity Date : 10-23-98

## 250TIBQL - 250TI BLK LACQUER LH

Level	X	Part Number	PC	Description	Rev	Quantity	U/M	MB	ECO	ECO Date	Strt Use	End Use	LdTm	PkOp	*
5		67158		Y1 POLE PIECE 1.982OD 0	D	1.0000	EA	B					2	10	
5		67157		YM BP/P EXT 4.500OD 1.4	J	1.0000	EA	B					5	10	
5		59647		DV MAG 2.315ID (2VC) 5.	D	1.0000	EA	B					84	10	
5		62354		RA T/P PLD 2.102ID (2VC	C	1.0000	EA	B					75	10	
5		67672		YM COND RING 1.750ID 1.	A	1.0000	EA	B					2	10	
5		63506		L* ADHESIVE, ACRYLIC	B	0.0800	OZ	B					35	10	
5		63507		L* ACTIVATOR, ACRYLIC	B	0.0080	OZ	B					42	10	
4	P	62545-02		FRAME ASSY108/116H-1	C	1.0000	EA	M		04-26-95			0	10	
5		68830-02		XP 108/116H-1 FRM PNT'D	C	1.0000	EA	B					2	10	
5		68172		Z TERMINAL DUAL	A	1.0000	EA	B					98	10	
5		68719		Z GSKT,TERM,DUAL	A	1.0000	EA	B					21	10	
4		62355		DH D/DOME 2.20/DIA 2.16	C	1.0000	EA	B		04-26-95			49	10	
4	P	62549-01		C/C ASSY 108H	M	1.0000	EA	M		04-26-95			0	10	
5		62548-02		OC VC ASSY 2.00ID .518	C	1.0000	EA	B					7	10	
5		62703		RT SPIDER 4.63DIA 2"VC/	B	1.0000	EA	B					49	10	
5	X	62549-0101		XC CONE COMP 7.870DIA	M	1.0000	EA	M	162M	07-11-89	07-11-89		2	10	
6		62356		RA CONE COMP 7.870DIA	C	1.0000	EA	B	162M	07-11-89	07-11-89		49	10	
6		62592		L* AQUAPLAS BLACK	A	0.0110	LB	B	162M	07-11-89	07-11-89		28	10	
5		66180-115		Z TINSEL/PIGTAIL LEAD	B	2.0000	EA	B	321T	07-19-93	07-19-93		56	10	
5		58605		Z EYELET - USM SE33	A	2.0000	EA	B					42	10	
5		20436S		LH SOLDER MULT O/P 250	A	0.0080	OZ	B					28	10	
5		63628A		L* ACCELERATOR,HENKEL	A	0.0150	OZ	B	14120	04-25-94	04-25-94		15	10	
5		63627		L* ADH,C.A.,SICO-MET	A	0.0305	OZ	B					42	10	
4		52926		Z SPACER TUBE MYLAR 2.	C	0.1000	EA	B		04-26-95			28	10	
4		52316		RT GASKET 8 IN 116A	H	4.0000	EA	B		04-26-95			21	10	
4		62498		RT ACCOUSTIC FILLER	A	1.0000	EA	B		04-26-95			21	10	
4		58373		Z SCREW,10-32X3/8 PAN	C	4.0000	EA	B		04-26-95			35	10	
4		29326S		L* BOSTIK BRN O/P 75GAL	B	0.0500	OZ	B		04-26-95			42	10	
4		73549-02		Z SCREEN,706/708/710G	A	1.0000	EA	B		04-26-95			70	10	
4		20436S		LH SOLDER MULT O/P 250	A	0.0120	OZ	B		04-26-95			28	10	
4		65336		L* BLK MAX ADHS/LOCTITE	A	0.0275	OZ	B		04-26-95			35	10	
4		63627		L* ADH,C.A.,SICO-MET	A	0.0575	OZ	B		04-26-95			42	10	
4	P	29368-01S		BOSTIK DYED BLACK		0.0500	OZ	M		04-26-95			0	10	
5		29368S		L* BOSTIK WHT O/P 50GAL	D	0.0497	OZ	B					42	10	
5		29454S		L1 DYE, BLUE O/P 1	B	0.0000	GL	B					28	10	
5		47417S		LB BLACK POWDER DYE		0.0000	LB	B					42	10	
4		63628A		L* ACCELERATOR,HENKEL	A	0.0400	OZ	B	14120	04-25-94	04-25-94		15	10	
4		75225		Z LABEL STOCK,1.5"X.25	B	1.0000	EA	B	15444	04-26-95	04-27-95		14	10	
4		72471		Z RIBBON,XFR,THRM,4.5"x1180	A	1.0000	IN	B	15444	04-26-95	04-27-95		21	10	
2	P	65180P		M/I 104H FOR FURN		1.0000	EA	M					0	995	
3	X	65180		2C M/I,104H	M	1.0000	EA	M					2	10	
4	X	61713-05		XP FRM,BRSHD/PNTD-104	F	1.0000	EA	M	549L	05-25-89	05-25-89		2	10	
5		65900-02		RA FRM 4.050OD 2.060ID	C	1.0000	EA	B	18809	09-16-96	09-16-96		35	10	
4	P	65186		CONE ASSY 104H	A	1.0000	EA	M		04-26-95			0	10	
5		65186-01		2D CONE/SURRD 4.000DIA	E	1.0000	EA	B					2	10	
5		32096-01		RA SPIDER 2.31DIA 1"VC/	P	1.0000	EA	B					49	10	
5		65189		OC VC ASSY 1.016ID .22	F	1.0000	EA	B					7	10	
5		66179-50		RA PIGTAIL(TINSEL LEAD)	A	2.0000	EA	B					56	10	
5		58605		Z EYELET - USM SE33	A	2.0000	EA	B					42	10	
5		20436S		LH SOLDER MULT O/P 250	A	0.0001	OZ	B					28	10	
5		63628A		L* ACCELERATOR,HENKEL	A	0.0001	OZ	B	14120	04-25-94	04-25-94		15	10	
5		63627		L* ADH,C.A.,SICO-MET	A	0.0015	OZ	B					42	10	
5	P	29368-01S		BOSTIK DYED BLACK		0.0100	OZ	M	20661	11-14-97	11-14-97		0		

## 250TIBQL - 250TI BLK LACQUER LH

Level	X	Part Number	PC	Description	Rev	Quantity	U/M	MB	ECO	ECO Date	Start Use	End Use	LdTm	PkOp	*
6		29368S	L*	BOSTIK WHT O/P 50GAL	D	0.0099	OZ	B					42	10	
6		29454S	L1	DYE, BLUE O/P 1	B	0.0000	GL	B					28	10	
6		47417S	LB	BLACK POWDER DYE		0.0000	LB	B					42	10	
4		N50127	DG	MAG 1.280ID (1VC) 3.	E	1.0000	EA	B	549L	05-25-89	05-25-89		84	10	
4		51868	RA	D/DOME 1.31/DIA 1.16	D	1.0000	EA	B			04-26-95		49	10	
4		65184-01	DH	BP/PP 0.995 P/DIA (1	C	1.0000	EA	B			04-26-95		75	10	
4	P	29931	LE5	TYPE 13 INCHES		1.0000	EA	M			04-26-95		0	10	
5		29942P	RA	VINYL EXTRUSION	B	1.0830	LF	B					49	10	
4		67371	RB	TP PLD 1.090ID (1VC)	A	1.0000	EA	B	549L	05-25-89	05-25-89		75	10	
4		53225	T8	TERMINAL BD LE5-6	F	1.0000	EA	B	549L	05-25-89	05-25-89		42	10	
4		53293	Z	RIVET TC1-9-ST LE25	B	1.0000	EA	B	549L	05-25-89	05-25-89		56	10	
4		69172	RB	SCREW 10-32X3/8 FIL	B	3.0000	EA	B	549L	05-25-89	05-25-89		35	10	
4		61558	Z	SPACER TUBE MYLAR	B	0.1000	EA	B	549L	05-25-89	05-25-89		35	10	
4		75225	Z	LABEL STOCK,1.5"X.25	B	1.0000	EA	B	15444	04-26-95	04-27-95		14	10	
4		72471	Z	RIBBON,XFR,THRM,4.5"x1180	A	1.0000	IN	B	15444	04-26-95	04-27-95		21	10	
4		63506	L*	ADHESIVE, ACRYLIC	B	0.0375	OZ	B	549L	05-25-89	05-25-89		35	10	
4		63507	L*	ACTIVATOR, ACRYLIC	B	0.0038	OZ	B	549L	05-25-89	05-25-89		42	10	
4		63627	L*	ADH,C.A.,SICO-MET	A	0.0550	OZ	B	549L	05-25-89	05-25-89		42	10	
4		63628A	L*	ACCELERATOR,HENKEL	A	0.1002	OZ	B	14120	04-25-94	04-25-94		15	10	
4		65336	L*	BLK MAX ADHS/LOCTITE	A	0.0200	OZ	B	549L	05-25-89	05-25-89		35	10	
4	P	29368-01S	BOSTIK	DYED BLACK		0.0300	OZ	M	549L	05-25-89	05-25-89		0	10	
5		29368S	L*	BOSTIK WHT O/P 50GAL	D	0.0298	OZ	B					42	10	
5		29454S	L1	DYE, BLUE O/P 1	B	0.0000	GL	B					28	10	
5		47417S	LB	BLACK POWDER DYE		0.0000	LB	B					42	10	
4		20436S	LH	SOLDER MULT O/P 250	A	0.0120	OZ	B	549L	05-25-89	05-25-89		28	10	
2	P	68669-04P	N	035TIA-1 FOR FURN.	A	1.0000	EA	M					0	995	
3	X	68669-04	2H	M/I,035TIA-1	C	1.0000	EA	M					2	995	
4	P	68630	DIAP/CVR	ASSY,035TI	J	1.0000	EA	M					0	10	
5		68643-01	RB	FACEPLATE-035TI RND/	K	1.0000	EA	B					56	10	
5		66337-01	5	DIAP TITANIUM COATED		1.0000	EA	B	935L	06-07-89	06-07-89		2	10	
5		66341-01	DH	VC ASSY .980ID .080	P	1.0000	EA	B	174N	05-14-90	05-14-90		35	10	
5		70192-02	Z	INSULATOR, T/P	B	1.0000	EA	B	174N	05-14-90	05-14-90		21	10	
5		20436S	LH	SOLDER MULT O/P 250	A	0.0080	OZ	B					28	10	
5		29368S	L*	BOSTIK WHT O/P 50GAL	D	0.0070	OZ	B					42	10	
5		63628A	L*	ACCELERATOR,HENKEL	A	0.0003	OZ	B	14120	04-25-94	04-25-94		15	10	
5		70191	Z	INSULATOR,DIAPH	B	1.0000	EA	B					21	10	
5		59174	Z	GLUE RING 044	C	0.2000	EA	B	360T	06-28-93	06-28-93		21	10	
5		331510-001	I	ADH,SICO-MET/63,CA	A	0.0005	OZ	B	17434	04-03-96	04-03-96				
4		62664	Z	RETAINER SCREEN	A	1.0000	EA	B					21	10	
4		66346	Z	035TI,FOAM PAD 7/8	C	1.0000	EA	B					21	10	
4		66555	Z	SCREW 8-32X5/16 BTHD	B	4.0000	EA	B					35	10	
4	P	70226	MAGNET	ASSY,046TI	E	1.0000	EA	M					0	10	
5		66343-01	RT	BP/PP 0.960 P/DIA (1	C	1.0000	EA	B					60	10	
5		66344	DJ	MAG 1.280ID (1VC) 3.	E	1.0000	EA	B					84	10	
5		68646	RA	TP PLD 1.023ID (1VC)	E	1.0000	EA	B					63	10	
5		71666	L*	ADH,LO-VISCOSTY,326,MOD-AA		0.0200	OZ	B	18172	06-15-96	06-17-96		35		
5		71667	L*	PRIMER,ADH,LOCTITE,#12695	A	0.0031	OZ	B	18172	06-15-96	06-17-96		35	10	
4		71514-01	Z	FOAM PAD, 1/8 THICK	A	1.0000	EA	B	856M	03-26-90	03-26-90		21	10	
4		62711	RB	SCRN,PNTD	A	1.0000	EA	B	20787	01-26-98	01-26-98		75		
2		71559	8	NTWK,250TI LACQUER	A	1.0000	EA	B					105	995	
2		20253	Z	GASKET VINYL	B	1.0000	EA	B					35	995	
2		52671	RT	GASKET REAR 116A	C	1.0000	EA	B					28	995	
2		21771	RB	GASKET VINYL LE5-2	B	1.0000	EA	B					35	995	

## 250TIBQL - 250TI BLK LACQUER LH

Level	X	Part Number	PC	Description	Rev	Quantity	U/M	MB	ECO	ECO Date	Strt Use	End Use	LdTm	PkOp	*
2		66553	Z	GASKET	D	1.0000	EA	B					28	995	
2		21847	RA	10-32X1 PHFLTHD BK	A	4.0000	EA	B					35	995	
2		33841	RA	SCR,#10-32X1"FILFLHD	A	4.0000	EA	B					35	995	
2		12704	RA	SCREW 6-32X1 FLTHD P	A	4.0000	EA	B					28	995	
2		22369	RA	#8X1 PHFLTHD WDS BK	D	3.0000	EA	B					35	995	
2		59460	Z	SCR,#8X3/4FLHDPH-BLK	A	8.0000	EA	B					35	995	
2	X	62843	HL	STIFF,FRNT/BACK C250	C	1.0000	EA	M	218M	08-25-89	08-25-89		3	995	
3		53147P	WN	DUGFR 1X3XR/L #1 COM	D	0.3472	LF	B					14	10	
2		N50630	RA	LITERATURE ENVELOPE	A	1.0000	EA	B					14	995	
2		N50777	Z	TECH NOTE LOW POWER	A	1.0000	EA	B					21	995	
2		71833	RA	#8-32X1/2",FLHD PH	A	4.0000	EA	B	410M	10-26-89	10-26-89		35	995	
2		20168S	L*	ADH-WHT GLUE	B	0.0010	GL	B	218M	08-25-89	08-25-89		7	995	
2		71561-01	DK	FOILCAL PLATE,250TIL	A	1.0000	EA	B	218M	08-25-89	08-25-89		56	995	
2	P	71560-01	UN	ASY,SHPNG-250TIBQL	D	1.0000	EA	M	218M	08-25-89	08-25-89		0	995	
3		71635	RD	CNT,250TI LACQUER	B	1.0000	EA	B	338M	10-05-89	10-05-89		21	995	
3		66413	0	STAPLE,CTN	A	20.0000	EA	B	410M	10-26-89	10-26-89		21	995	
3		71631	LI	END PAD,TOP FR.250TI	A	1.0000	EA	B					7	995	
3		71632	LI	END PAD,BOT.FR.250TI	A	1.0000	EA	B					7	995	
3		71633	LI	END PAD,REAR 250TI	B	2.0000	EA	B					7	995	
3		71634	LI	END PAD,INSERT 250TI	A	1.0000	EA	B					7	995	
3		65012-01	LH	TAPE,CTN,3"X165LINFT	B	18.0000	LF	B	410M	10-26-89	10-26-89		7	995	
3		72298	0	FIBER MTRL.36"X 24"	B	6.0000	EA	B	19621	01-20-97	01-20-97		14		
3		49790P	L.	PKG,MICROFOAM	A	6.0000	EA	B	292M	09-14-89	09-14-89		21	995	
3		71702-01	0	LBL,CTN,BQL-250TI	D	2.0000	EA	B	338M	10-05-89	10-05-89		21	995	
2		71616	RA	SCR,#6X5/8PHRDHDBRPL	A	4.0000	EA	B	218M	08-25-89	08-25-89		35	995	
2		65424-02	LF	MANUAL 250TI LACQUER	B	1.0000	EA	B					21	995	
2		48003-02	RA	LOGO 250TI	A	1.0000	EA	B					40	995	
2		71317	L3	GLOVES W/PLASTIC BAG	A	1.0000	EA	B					7	995	
2		66724	LN	ADH,HOT-MELT CARTHRD	A	0.0170	LB	B	410M	10-26-89	10-26-89		21	995	
2		71074	RA	WRENCH,TERM POST XPL	B	1.0000	EA	B					98	995	
2		63062	LH	STRIP CAULK,BLK	A	0.2000	EA	B					7	995	
2	P	71031-01	HI	GL.LACQ.FIN.-BLK.	E	22.6000	SF	M					0	995	
3	P	71005		BLACK BASE COAT	E	0.0610	GL	M	465M	11-10-89	11-10-89		0	10	
3	P	71032-01		URETHANE,BLACK	E	0.0904	GL	M					0	10	
4		71010	LD	BLK GLOSSLINE T/COAT	C	0.0393	GL	B	17282	03-18-96	03-28-96		21		
4		71012	LD	CAT,GLOSSLINE COMP.B	C	0.0393	GL	B	17282	03-18-96	03-28-96		21		
4		71411	LD	REDUCING SOL,SLOW	A	0.0118	GL	B	17282	03-18-96	03-28-96		21		
3	P	334065-001		PNT,PE,BASE COAT	B	0.5334	GA	M	20670	11-17-97	11-17-97				
4		334063-001		PNT,BLK,POLYESTER	%	0.5227	GA	B						10	
4		334064-001		PNT,PE,CATHALYST	%	0.0107	GA	B						10	
2		20305S	RA	GLIDE #20 5/8 DIA	A	4.0000	EA	B	355M	10-05-89	10-05-89		42	995	
2	X	70515-07	RA	PTB,4.125IDX5.0L,PLSTC,	M	1.0000	EA	M					56	995	
3		LS1067		RESIN,POLYSTYRENE	A	0.0000	LB	B			06-25-98			10	
3		LS1073		INK,PS,BLK	A	0.0000	LB	B			06-25-98			10	
2		61577	RB	SCREW,8X2,FLH BLK	B	6.0000	EA	B	444P	05-02-91	05-02-91		35	995	
2		22372	RA	1-1/2 PHFLTHD MS BK	D	4.0000	EA	B					35	995	
2	P	71031-03		LOW GLOSS BLK LACQ.	D	5.5347	SF	M	355M	10-05-89	10-05-89		0	995	
3	P	71005		BLACK BASE COAT	E	0.0149	GL	M	465M	11-10-89	11-10-89		0	10	
3	P	71032-03		LOW GLOSS URETH,BLK	B	0.0282	GL	M	736M	03-14-90	03-14-90		0	10	
4		71644	LD	LOW GLOSS POLY./CAT.	A	0.0092	GL	B					21	10	
4		71411	LD	REDUCING SOL,SLOW	A	0.0005	GL	B					21	10	
3	P	334065-001		PNT,PE,BASE COAT	B	0.1306	GA	M	20670	11-17-97	11-17-97				
4		334063-001		PNT,BLK,POLYESTER	%	0.1280	GA	B						10	

OCT 23 1998

Indented Bill of Materials

Page 7

Procedure: ECC-R-08 - Account: ECC-NMG54

Effectivity Date : 10-23-98

250TIBQL - 250TI BLK LACQUER LH

.Level. X ..Part Number.. PC .....Description..... Rev Quantity. U/M. MB .ECO.... ECO Date Strt Use End Use LdTm PkOp \*

4	334064-001		PNT,PE,CATHALYST	%	0.0026	GA	B						10
2	65840		WG GRILLE RETAINER	B	6.0000	EA	B	355M	10-05-89	10-05-89		56	995
2	P 72249-1081		AA BRCD,250TIBQL	A	1.0000	EA	M	266P	05-02-91	05-02-91		7	995
3	73265		Z LBL STOCK,4.625X4.12	A	1.0000	EA	B					28	995
3	72471		Z RIBBON,XFR,THRM,4.5"x1180	A	4.7500	IN	B					21	995

Procedure: ECC-R-08 - Account: ECC-NMG54

Effectivity Date : 10-23-98

## 250TIBQLC - 250TI BLK LCQR CLSC

.Level.	X	..Part Number..	PC	.....Description.....	Rev	Quantity.	U/M.	MB	.ECO....	ECO Date	Strt Use	End Use	LdTm	PkOp *
0	X	250TIBQLC	RA	250TI BLK LCQR CLSC	A	1.0000	EA	M					2	
1	P	71557-05		S/M,250TIBQLC	D	1.0000	EA	M					0	10
2	X	71558-01	RA	MFD ITEM,250TI LH	E	1.0000	EA	M					0	10
3	X	71562-03	HL	BAFFLE LH,250LAQUER	A	1.0000	EA	M					3	10
4		58524-06	WR	3/4X61X109,FIBERBRD	A	9.0000	SF	B	14638	04-08-94	04-08-94		56	10
3	X	71563-01	HL	REAR PNL LH,250LACQU	B	1.0000	EA	M					3	10
4		58524-06	WR	3/4X61X109,FIBERBRD	A	9.0000	SF	B	14638	04-08-94	04-08-94		56	10
3	X	71564-01	HL	SIDE VER LH,250 LAC	B	1.0000	EA	M					3	10
4		58524-06	WR	3/4X61X109,FIBERBRD	A	5.6250	SF	B	14638	04-08-94	04-08-94		56	10
3	X	71565-01	HL	SIDE 13DEG LH,250LAC	B	1.0000	EA	M					3	10
4		58524-06	WR	3/4X61X109,FIBERBRD	A	5.6250	SF	B	14638	04-08-94	04-08-94		56	10
3	X	71566-01	HL	TOP PNL LH,250 LAC	B	1.0000	EA	M					3	10
4		58524-06	WR	3/4X61X109,FIBERBRD	A	0.8000	SF	B	14638	04-08-94	04-08-94		56	10
3	X	71578-01	HL	BOT PNL,LEFT 250 LAC	B	1.0000	EA	M					3	10
4		58524-06	WR	3/4X61X109,FIBERBRD	A	2.2500	SF	B	14638	04-08-94	04-08-94		56	10
3	X	62840	HL	SUB-ENC, TOP C250	B	1.0000	EA	M					3	10
4		20889-24	WP	5/8X5X12,P/B U/F	A	0.5130	SF	B	14049	09-08-93	09-08-93		10	10
3	X	62840-01	HL	SUB-ENC,BOT C250	A	1.0000	EA	M					3	10
4		20889-24	WP	5/8X5X12,P/B U/F	A	0.5130	SF	B	14049	09-08-93	09-08-93		10	10
3	X	62841	HL	SUB-ENCL,SIDE C250	A	2.0000	EA	M					3	10
4		20889-24	WP	5/8X5X12,P/B U/F	A	0.7892	SF	B	14049	09-08-93	09-08-93		10	10
3	X	62842	HL	SUB-ENCL,BACK C250	A	1.0000	EA	M					3	10
4		20889-24	WP	5/8X5X12,P/B U/F	A	0.7696	SF	B	14049	09-08-93	09-08-93		10	10
3	P	47224-166		SOUND PAD, 12 X 20	A	1.0000	EA	M	218M	08-25-89	08-25-89		0	10
4		22389P	0	1"THK.FIBERGLASS	D	1.6667	SF	B					14	10
3	X	63060-01	HL	STIF,SIDE LOWER C250	B	3.0000	EA	M					3	10
4		53147P	WN	DUGFR 1X3XR/L #1 COM	D	3.1596	LF	B					14	10
3	X	63060-02	HL	STIF,SIDE CENTR C250	A	2.0000	EA	M					3	10
4		53147P	WN	DUGFR 1X3XR/L #1 COM	D	1.8518	LF	B					14	10
3	X	63060-03	HL	STIF,SIDE UPPER C250	A	2.0000	EA	M					3	10
4		53147P	WN	DUGFR 1X3XR/L #1 COM	D	1.5972	LF	B					14	10
3		56144	RA	PORT TUBE 5.31IDX4.0	KX	1.0000	EA	B					28	10
3	X	56145	HL	PLUG VARIOUS MODELS		1.0000	EA	M					3	10
4		31329-06	WR	PB BLK FL 3/4X61X109	C	0.2200	SF	B	14638	04-08-94	04-08-94		56	10
3	X	62844	HL	CLEAT,PNL TOP C250	C	1.0000	EA	M					3	10
4		55833P	WN	SHOP PNE 3/4X3/4XR/L	A	0.8481	LF	B					21	10
3	X	62845	HL	CLEAT PN VERT S L250	A	1.0000	EA	M					3	10
4		55833P	WN	SHOP PNE 3/4X3/4XR/L	A	4.6296	LF	B					21	10
3	X	62846	HL	CLEAT,PNL 13DEG C250	B	1.0000	EA	M					3	10
4		55833P	WN	SHOP PNE 3/4X3/4XR/L	A	4.6407	LF	B					21	10
3	X	62847	HL	CLEAT,BOTM/BACK C250	A	1.0000	EA	M					3	10
4		55833P	WN	SHOP PNE 3/4X3/4XR/L	A	1.9259	LF	B					21	10
3	X	62964	HL	CLEAT,BOT VERT C250	B	1.0000	EA	M					3	10
4		55833P	WN	SHOP PNE 3/4X3/4XR/L	A	1.0463	LF	B					21	10
3	X	62965	HL	CLEAT,BOT 13DEG C250	C	1.0000	EA	M					3	10
4		55833P	WN	SHOP PNE 3/4X3/4XR/L	A	1.0463	LF	B					21	10
3	X	62968-01	HL	CLEAT,BOT/FRNT,C250L	A	1.0000	EA	M					3	10
4		55833P	WN	SHOP PNE 3/4X3/4XR/L	A	1.9664	LF	B					21	10
3	P	62848		PAD,SND SIDE C250	A	2.0000	EA	M					0	10
4		22389P	0	1"THK.FIBERGLASS	D	9.2000	SF	B	494P	07-19-91	07-19-91		14	10
3	P	71640		SOUND PAD,REAR PANEL	A	1.0000	EA	M	218M	08-25-89	08-25-89		0	10
4		22389P	0	1"THK.FIBERGLASS	D	4.0000	SF	B					14	10
3	P	53189		SOUND PADDING FIBRGL	C	1.0000	EA	M					0	10

Procedure: ECC-R-08 - Account: ECC-NMG54

Effectivity Date : 10-23-98

250TIBQLC - 250TI BLK LCQR CLSC

Level	X	Part Number	PC	Description	Rev	Quantity	U/M	MB	ECO	ECO Date	Strt Use	End Use	LdTm	PkOp	*
4		22389P	0	1"THK.FIBERGLASS	D	1.7180	SF	B	494P	07-19-91	07-19-91		14	10	
3	P	57197		SOUND PADDING FIBRGL	B	1.0000	EA	M					0	10	
4		22389P	0	1"THK.FIBERGLASS	D	0.8333	SF	B					14	10	
3		59931S	0	NAIL,SPOT.3/16x1-1/8	%	80.0000	EA	B					21	10	
3		20168S	L*	ADH-WHT GLUE	B	0.0500	GL	B					7	10	
3		66730	LH	ADH,HOT MELT,DIP	A	0.0100	LB	B					35	10	
3	X	63974	HL	CORNER BLOCK L250	B	2.0000	EA	M					3	10	
4		55833P	WN	SHOP PNE 3/4X3/4XR/L	A	0.3334	LF	B					21	10	
3		22370	RB	#8X2 PH FL HD WD SCR	D	14.0000	EA	B					35	10	
3	X	52073	HL	CLEAT, .75X.75X10.31	A	2.0000	EA	M	218M	08-25-89	08-25-89		3	10	
4		55833P	WN	SHOP PNE 3/4X3/4XR/L	A	1.7186	LF	B					21	10	
3	X	62580	HL	CLEAT FR HORIZ 2506		1.0000	EA	M					3	10	
4		55833P	WN	SHOP PNE 3/4X3/4XR/L	A	0.9740	LF	B					21	10	
3	X	60617	HL	PORT CLEAT,12" 4560		2.0000	EA	M					3	10	
4		55833P	WN	SHOP PNE 3/4X3/4XR/L	A	2.0000	LF	B					21	10	
3	P	47224-84		SOUND PADDING FIBRGL	B	1.0000	EA	M	218M	08-25-89	08-25-89		0	10	
4		22389P	0	1"THK.FIBERGLASS	D	0.3542	SF	B					14	10	
3	X	59854	HL	CLEAT 4530BK		1.0000	EA	M					3	10	
4		55833P	WN	SHOP PNE 3/4X3/4XR/L	A	1.0833	LF	B					21	10	
3		62784	WN	GLUE BLOCK 3/4SQX2"L	C	2.0000	EA	B					28	10	
3	X	71603	HL	CLEAT,6DEG ANG SIDE	A	1.0000	EA	M					3	10	
4		55833P	WN	SHOP PNE 3/4X3/4XR/L	A	0.6042	LF	B					21	10	
3		61861	Z	T-NUT,10-32	A	8.0000	EA	B					42	10	
3		61859	RA	T-NUT 6-32X11/32	A	4.0000	EA	B					42	10	
3	X	71584	HL	BASE PNL,250TI LAC	A	1.0000	EA	M					3	10	
4		60238	WN	UNTEMP HB 1/4X48X96		2.2857	SF	B					21	10	
3		67375	RT	#8X1-1/4,FLT,PH,PTBD	B	2.0000	EA	B					35	10	
3		39106S	0	NAIL,FINISHING 1"	A	22.0000	EA	B	20653	11-13-97	11-18-97		21		
2		N50630	RA	LITERATURE ENVELOPE	A	0.5000	EA	B	15376	01-10-95	01-10-95		14	10	
2		N50777	Z	TECH NOTE LOW POWER	A	0.5000	EA	B	15376	01-10-95	01-10-95		21	10	
2	X	59605-02	2D	M/I,LE14H-1	C	1.0000	EA	M	15376	01-10-95	01-10-95		2	10	
3	X	59642-02	M3	COV,MAG,THERMOPLSTC RBR	F	1.0000	EA	M					35	10	
4		LS1083	VYL	TEKNOR APEX,3174/75	A	0.0671	LB	B						10	
4		LS1085	REED	UN0055P,DEEP_BLK	A	0.0037	LB	B						10	
3	P	66596-01		MAGNET ASSY 4"	F	1.0000	EA	M					0	10	
4		66585-01	YM	BP/P EXT 7.7500D 1.0	D	1.0000	EA	B					2	10	
4	X	59867-0186	XP	DEBURRED,4"COND/RING	F	1.0000	EA	M					2	10	
5		59867-01	RT	COND RING 30540ID 3.	E	1.0000	EA	B					35	10	
4		59552-01	MI	T/P PLD 3.999ID (3VC	H	1.0000	EA	B					85	10	
4		66597-01	Y1	POLE PIECE 3.8790D 0	C	1.0000	EA	B					2	10	
4		59548-01	RT	MAG 4.600ID (3VC) 8.	G	1.0000	EA	B					84	10	
4		63507	L*	ACTIVATOR, ACRYLIC	B	0.0160	OZ	B					42	10	
4		63506	L*	ADHESIVE, ACRYLIC	B	0.1600	OZ	B					35	10	
3		50201	Z	D/DOME 4.025/DIA 3.9	R	1.0000	EA	B					49	10	
3		57369-18	JR	FOILCAL LE14H-1	A	1.0000	EA	B					70	10	
3		60925	RT	FOAM PLUG	A	1.0000	EA	B					21	10	
3		29326S	L*	BOSTIK BRN O/P 75GAL	B	0.0780	OZ	B					42	10	
3	P	21811		MOULDING 39 INCHES		1.0000	EA	M					0	10	
4		29942P	RA	VINYL EXTRUSION	B	3.2750	LF	B					49	10	
3	P	62357		C/C ASSY LE14H-1 4IN	H	1.0000	EA	M					0	10	
4		52729S	L*	ABELSTICK,O/P-300	B	0.0600	EA	B					28	10	
4		48839-01	OC	VC ASSY 3.90ID .750	A	1.0000	EA	B					7	10	
4		58605	Z	EYELET - USM SE33	A	2.0000	EA	B					42	10	

Procedure: ECC-R-08 - Account: ECC-NMG54

Effectivity Date : 10-23-98

250TIBQLC - 250TI BLK LCQR CLSC

Level	X	Part Number	PC	Description	Rev	Quantity	U/M	MB	ECO	ECO Date	Start Use	End Use	LdTm	PkOp	*
4		66180-115	Z	TINSEL/PIGTAIL LEAD	B	2.0000	EA	B					56	10	
4		51164	0	SPIDER 7.0DIA 4"VCID	J	1.0000	EA	B					49	10	
4	P	29368-01S		BOSTIK DYED BLACK		0.0050	OZ	M	146M	10-24-89	10-24-89		0	10	
5		29368S	L*	BOSTIK WHT O/P 50GAL	D	0.0050	OZ	B					42	10	
5		29454S	L1	DYE, BLUE O/P 1	B	0.0000	GL	B					28	10	
5		47417S	LB	BLACK POWDER DYE		0.0000	LB	B					42	10	
4		29474S	LH	SOLDER ROSIN O/P 50	A	0.0080	OZ	B	146M	10-24-89	10-24-89		28	10	
4		63628A	L*	ACCELERATOR, HENKEL	A	0.0050	OZ	B	14120	04-25-94	04-25-94		15	10	
4		65336	L*	BLK MAX ADHS/LOCTITE	A	0.0100	OZ	B	146M	10-24-89	10-24-89		35	10	
4	X	71581-01	XC	CONE COMP 12.160DIA	A	1.0000	EA	M	146M	10-24-89	10-24-89		2	10	
5		71581	0	CONE COMP 12.160DIA	A	1.0000	EA	B					49	10	
5		62592	L*	AQUAPLAS BLACK	A	0.1444	LB	B					28	10	
3		59631-01	Z	SCREEN, BLACK	D	1.0000	EA	B					21	10	
3		58373	Z	SCREW, 10-32X3/8 PAN	C	6.0000	EA	B					35	10	
3		20436S	LH	SOLDER MULT O/P 250	A	0.0120	OZ	B					28	10	
3	P	29368-01S		BOSTIK DYED BLACK		0.0700	OZ	M					0	10	
4		29368S	L*	BOSTIK WHT O/P 50GAL	D	0.0696	OZ	B					42	10	
4		29454S	L1	DYE, BLUE O/P 1	B	0.0000	GL	B					28	10	
4		47417S	LB	BLACK POWDER DYE		0.0000	LB	B					42	10	
3		61443	AU	SPACER TUBE MYLAR 4"	A	0.0100	EA	B					35	10	
3	P	70637-02		FRAME ASSY, LE14H-1	C	1.0000	EA	M					2	10	
4	X	70636-02	XP	FRM, BRHSD/PNTD-LE14	B	1.0000	EA	M					2	10	
5	P	68303		FRAME DEBURRED 14"	C	1.0000	EA	M					0	10	
6		68303-0099	0	FRM 12.7500D 5.500ID	B	1.0000	EA	B					35	10	
4		68719	Z	GSKT, TERM, DUAL	A	1.0000	EA	B					21	10	
4		323892-001	Z	TERMINAL, DUAL	B	1.0000	EA	B	16710	12-08-95	04-01-96		141		
3		63627	L*	ADH, C.A., SICO-MET	A	0.1050	OZ	B					42	10	
3		63628A	L*	ACCELERATOR, HENKEL	A	0.0713	OZ	B					15	10	
3		63506	L*	ADHESIVE, ACRYLIC	B	0.0400	OZ	B					35	10	
3		63507	L*	ACTIVATOR, ACRYLIC	B	0.0040	OZ	B					42	10	
3		72266	L*	ADH, SICO-MET, 5181	A	0.0375	OZ	B					42	10	
3	P	74822		LABEL, DATE CODE	A	1.0000	EA	M	20773	01-20-98	01-21-98		0		
4		75225	Z	LABEL STOCK, 1.5"X.25	B	1.0000	EA	B					14	10	
4		72471	Z	RIBBON, XFR, THRM, 4.5"x1180	A	0.5417	IN	B					21	10	
3	P	74822		LABEL, DATE CODE	A	1.0000	EA	M	20773	01-20-98	01-21-98		0		
4		75225	Z	LABEL STOCK, 1.5"X.25	B	1.0000	EA	B					14	10	
4		72471	Z	RIBBON, XFR, THRM, 4.5"x1180	A	0.5417	IN	B					21	10	
2	X	62526-01	2C	M/I, 108H	S	1.0000	EA	M	15376	01-10-95	01-10-95		2	10	
3	P	67182		MAGNET ASSY, 2118H	F	1.0000	EA	M			04-26-95		0	10	
4		67158	Y1	POLE PIECE 1.9820D 0	D	1.0000	EA	B					2	10	
4		67157	YM	BP/P EXT 4.5000D 1.4	J	1.0000	EA	B					5	10	
4		59647	DV	MAG 2.315ID (2VC) 5.	D	1.0000	EA	B					84	10	
4		62354	RA	T/P PLD 2.102ID (2VC)	C	1.0000	EA	B					75	10	
4		67672	YM	COND RING 1.750ID 1.	A	1.0000	EA	B					2	10	
4		63506	L*	ADHESIVE, ACRYLIC	B	0.0800	OZ	B					35	10	
4		63507	L*	ACTIVATOR, ACRYLIC	B	0.0080	OZ	B					42	10	
3	P	62545-02		FRAME ASSY 108/116H-1	C	1.0000	EA	M			04-26-95		0	10	
4		68830-02	XP	108/116H-1 FRM PNT'D	C	1.0000	EA	B					2	10	
4		68172	Z	TERMINAL DUAL	A	1.0000	EA	B					98	10	
4		68719	Z	GSKT, TERM, DUAL	A	1.0000	EA	B					21	10	
3		62355	DH	D/DOME 2.20/DIA 2.16	C	1.0000	EA	B			04-26-95		49	10	
3	P	62549-01		C/C ASSY 108H	M	1.0000	EA	M			04-26-95		0	10	
4		62548-02	OC	VC ASSY 2.00ID .518	C	1.0000	EA	B					7	10	

## 250TIBQLC - 250TI BLK LCQR CLSC

Level	X	Part Number	PC	Description	Rev	Quantity	U/M	MB	ECO	ECO Date	Start Use	End Use	LdTm	PkOp	*
4		62703		RT SPIDER 4.63DIA 2"VC/	B	1.0000	EA	B					49	10	
4	X	62549-0101		XC CONE COMP 7.870DIA	M	1.0000	EA	M 162M		07-11-89	07-11-89		2	10	
5		62356		RA CONE COMP 7.870DIA	C	1.0000	EA	B 162M		07-11-89	07-11-89		49	10	
5		62592		L* AQUAPLAS BLACK	A	0.0110	LB	B 162M		07-11-89	07-11-89		28	10	
4		66180-115		Z TINSEL/PIGTAIL LEAD	B	2.0000	EA	B 321T		07-19-93	07-19-93		56	10	
4		58605		Z EYELET - USM SE33	A	2.0000	EA	B					42	10	
4		20436S		LH SOLDER MULT O/P 250	A	0.0080	OZ	B					28	10	
4		63628A		L* ACCELERATOR, HENKEL	A	0.0150	OZ	B 14120		04-25-94	04-25-94		15	10	
4		63627		L* ADH, C.A., SICO-MET	A	0.0305	OZ	B					42	10	
3		52926		Z SPACER TUBE MYLAR 2.	C	0.1000	EA	B			04-26-95		28	10	
3		52316		RT GASKET 8 IN 116A	H	4.0000	EA	B			04-26-95		21	10	
3		62498		RT ACOUSTIC FILLER	A	1.0000	EA	B			04-26-95		21	10	
3		58373		Z SCREW, 10-32X3/8 PAN	C	4.0000	EA	B			04-26-95		35	10	
3		29326S		L* BOSTIK BRN O/P 75GAL	B	0.0500	OZ	B			04-26-95		42	10	
3		73549-02		Z SCREEN, 706/708/710G	A	1.0000	EA	B			04-26-95		70	10	
3		20436S		LH SOLDER MULT O/P 250	A	0.0120	OZ	B			04-26-95		28	10	
3		65336		L* BLK MAX ADHS/LOCTITE	A	0.0275	OZ	B			04-26-95		35	10	
3		63627		L* ADH, C.A., SICO-MET	A	0.0575	OZ	B			04-26-95		42	10	
3	P	29368-01S		BOSTIK DYED BLACK		0.0500	OZ	M			04-26-95		0	10	
4		29368S		L* BOSTIK WHT O/P 50GAL	D	0.0497	OZ	B					42	10	
4		29454S		L1 DYE, BLUE O/P 1	B	0.0000	GL	B					28	10	
4		47417S		LB BLACK POWDER DYE		0.0000	LB	B					42	10	
3		63628A		L* ACCELERATOR, HENKEL	A	0.0400	OZ	B 14120		04-25-94	04-25-94		15	10	
3		75225		Z LABEL STOCK, 1.5"X.25	B	1.0000	EA	B 15444		04-26-95	04-27-95		14	10	
3		72471		Z RIBBON, XFR, THRM, 4.5"x1180	A	1.0000	IN	B 15444		04-26-95	04-27-95		21	10	
2	X	65180		2C M/I, 104H	M	1.0000	EA	M 15376		01-10-95	01-10-95		2	10	
3	X	61713-05		XP FRM, BRSHD/PNTD-104	F	1.0000	EA	M 549L		05-25-89	05-25-89		2	10	
4		65900-02		RA FRM 4.050OD 2.060ID	C	1.0000	EA	B 18809		09-16-96	09-16-96		35	10	
3	P	65186		CONE ASSY 104H	A	1.0000	EA	M			04-26-95		0	10	
4		65186-01		2D CONE/SURRD 4.000DIA	E	1.0000	EA	B					2	10	
4		32096-01		RA SPIDER 2.31DIA 1"VC/	P	1.0000	EA	B					49	10	
4		65189		OC VC ASSY 1.016ID .22	F	1.0000	EA	B					7	10	
4		66179-50		RA PIGTAIL (TINSEL LEAD)	A	2.0000	EA	B					56	10	
4		58605		Z EYELET - USM SE33	A	2.0000	EA	B					42	10	
4		20436S		LH SOLDER MULT O/P 250	A	0.0001	OZ	B					28	10	
4		63628A		L* ACCELERATOR, HENKEL	A	0.0001	OZ	B 14120		04-25-94	04-25-94		15	10	
4		63627		L* ADH, C.A., SICO-MET	A	0.0015	OZ	B					42	10	
4	P	29368-01S		BOSTIK DYED BLACK		0.0100	OZ	M 20661		11-14-97	11-14-97		0		
5		29368S		L* BOSTIK WHT O/P 50GAL	D	0.0099	OZ	B					42	10	
5		29454S		L1 DYE, BLUE O/P 1	B	0.0000	GL	B					28	10	
5		47417S		LB BLACK POWDER DYE		0.0000	LB	B					42	10	
3		N50127		DG MAG 1.280ID (1VC) 3.	E	1.0000	EA	B 549L		05-25-89	05-25-89		84	10	
3		51868		RA D/DOME 1.31/DIA 1.16	D	1.0000	EA	B			04-26-95		49	10	
3		65184-01		DH BP/PP 0.995 P/DIA (1	C	1.0000	EA	B			04-26-95		75	10	
3	P	29931		LB5 TYPE 13 INCHES		1.0000	EA	M			04-26-95		0	10	
4		29942P		RA VINYL EXTRUSION	B	1.0830	LF	B					49	10	
3		67371		RB TP PLD 1.090ID (1VC)	A	1.0000	EA	B 549L		05-25-89	05-25-89		75	10	
3		53225		T8 TERMINAL BD LE5-6	F	1.0000	EA	B 549L		05-25-89	05-25-89		42	10	
3		53293		Z RIVET TC1-9-ST LE25	B	1.0000	EA	B 549L		05-25-89	05-25-89		56	10	
3		69172		RB SCREW 10-32X3/8 FIL	B	3.0000	EA	B 549L		05-25-89	05-25-89		35	10	
3		61558		Z SPACER TUBE MYLAR	B	0.1000	EA	B 549L		05-25-89	05-25-89		35	10	
3		75225		Z LABEL STOCK, 1.5"X.25	B	1.0000	EA	B 15444		04-26-95	04-27-95		14	10	
3		72471		Z RIBBON, XFR, THRM, 4.5"x1180	A	1.0000	IN	B 15444		04-26-95	04-27-95		21	10	



Procedure: ECC-R-08 - Account: ECC-NMG54

Effectivity Date : 10-23-98

250TIBQLC - 250TI BLK LCQR CLSC

.Level.	X	..Part Number..	PC	.....Description.....	Rev	Quantity.	U/M.	MB	.ECO....	ECO Date	Strt Use	End Use	LdTm	PkOp	*
3		63506		L* ADHESIVE, ACRYLIC	B	0.0375 OZ	B	549L		05-25-89	05-25-89		35	10	
3		63507		L* ACTIVATOR, ACRYLIC	B	0.0038 OZ	B	549L		05-25-89	05-25-89		42	10	
3		63627		L* ADH,C.A.,SICO-MET	A	0.0550 OZ	B	549L		05-25-89	05-25-89		42	10	
3		63628A		L* ACCELERATOR,HENKEL	A	0.1002 OZ	B	14120		04-25-94	04-25-94		15	10	
3		65336		L* BLK MAX ADHS/LOCTITE	A	0.0200 OZ	B	549L		05-25-89	05-25-89		35	10	
3	P	29368-01S		BOSTIK DYED BLACK		0.0300 OZ	M	549L		05-25-89	05-25-89		0	10	
4		29368S		L* BOSTIK WHT O/P 50GAL	D	0.0298 OZ	B						42	10	
4		29454S		L1 DYE, BLUE O/P 1	B	0.0000 GL	B						28	10	
4		47417S		LB BLACK POWDER DYE		0.0000 LB	B						42	10	
3		20436S		LH SOLDER MULT O/P 250	A	0.0120 OZ	B	549L		05-25-89	05-25-89		28	10	
2		20253		Z GASKET VINYL	B	1.0000 EA	B						35	10	
2		52671		RT GASKET REAR 116A	C	1.0000 EA	B						28	10	
2		21771		RB GASKET VINYL LE5-2	B	1.0000 EA	B						35	10	
2		66553		Z GASKET	D	1.0000 EA	B						28	10	
2		21847		RA 10-32X1 PHFLTHD BK	A	4.0000 EA	B						35	10	
2		33841		RA SCR,#10-32X1"FILFLHD	A	4.0000 EA	B						35	10	
2		12704		RA SCREW 6-32X1 FLTHD P	A	4.0000 EA	B						28	10	
2		22369		RA #8X1 PHFLTHD WDS BK	D	3.0000 EA	B						35	10	
2		59460		Z SCR,#8X3/4FLHDPH-BLK	A	8.0000 EA	B						35	10	
2		20305S		RA GLIDE #20 5/8 DIA	A	4.0000 EA	B						42	10	
2		65424-03		RA MNL,CLASSIC-250TI	??	0.5000 EA	B	15376		01-11-95	01-12-95		21	10	
2		48003-02		RA LOGO 250TI	A	1.0000 EA	B						40	10	
2		71317		L3 GLOVES W/PLASTIC BAG	A	1.0000 EA	B						7	10	
2		71074		RA WRENCH,TERM POST XPL	B	1.0000 EA	B						98	10	
2		63062		LH STRIP CAULK,BLK	A	0.2000 EA	B						7	10	
2	P	71031-01		HI.GL.LACQ.FIN.-BLK.	E	22.6000 SF	M						0	10	
3	P	71005		BLACK BASE COAT	E	0.0610 GL	M	465M		11-10-89	11-10-89		0	10	
3	P	71032-01		URETHANE,BLACK	E	0.0904 GL	M						0	10	
4		71010		LD BLK GLOSSLINE T/COAT	C	0.0393 GL	B	17282		03-18-96	03-28-96		21		
4		71012		LD CAT,GLOSSLINE COMP.B	C	0.0393 GL	B	17282		03-18-96	03-28-96		21		
4		71411		LD REDUCING SOL,SLOW	A	0.0118 GL	B	17282		03-18-96	03-28-96		21		
3	P	334065-001		PNT,PE,BASE COAT	B	0.5334 GA	M	20670		11-17-97	11-17-97				
4		334063-001		PNT,BLK,POLYESTER	%	0.5227 GA	B							10	
4		334064-001		PNT,PE,CATHALYST	%	0.0107 GA	B							10	
2	P	71031-03		LOW GLOSS BLK LACQ.	D	5.5347 SF	M						0	10	
3	P	71005		BLACK BASE COAT	E	0.0149 GL	M	465M		11-10-89	11-10-89		0	10	
3	P	71032-03		LOW GLOSS URETH,BLK	B	0.0282 GL	M	736M		03-14-90	03-14-90		0	10	
4		71644		LD LOW GLOSS POLY./CAT.	A	0.0092 GL	B						21	10	
4		71411		LD REDUCING SOL,SLOW	A	0.0005 GL	B						21	10	
3	P	334065-001		PNT,PE,BASE COAT	B	0.1306 GA	M	20670		11-17-97	11-17-97				
4		334063-001		PNT,BLK,POLYESTER	%	0.1280 GA	B							10	
4		334064-001		PNT,PE,CATHALYST	%	0.0026 GA	B							10	
2		65840		WG GRILLE RETAINER	B	6.0000 EA	B						56	10	
2	X	70515-07		RA PTB,4.125IDX5.0L,PLSTC,	M	1.0000 EA	M						56	10	
3		LS1067		RESIN,POLYSTYRENE	A	0.0000 LB	B				06-25-98			10	
3		LS1073		INK,PS,BLK	A	0.0000 LB	B				06-25-98			10	
2		61577		RB SCREW,8X2,FLH BLK	B	6.0000 EA	B						35	10	
2	X	62843		HL STIFF,FRNT/BACK C250	C	1.0000 EA	M						3	10	
3		53147P		WN DUGFR 1X3XR/L #1 COM	D	0.3472 LF	B						14	10	
2		66724		LN ADH,HOT-MELT CARTHRD	A	0.0170 LB	B						21	10	
2		20168S		L* ADH-WHT GLUE	B	0.0010 GL	B						7	10	
2		71616		RA SCR,#6X5/8PHRDHDBRPL	A	4.0000 EA	B						35	10	
2		74531-01		RA FOILCAL, 250TIBQLC	C	1.0000 EA	B						35	10	

Procedure: ECC-R-08 - Account: ECC-NMG54

Effectivity Date : 10-23-98

## 250TIBQLC - 250TI BLK LCQR CLSC

Level	X	Part Number	PC	Description	Rev	Quantity	U/M	MB	ECO	ECO Date	Strt Use	End Use	LdTm	PkOp	*
2		P 71560-07		ASY,SHPNG-250TIBQLC	C	1.0000	EA	M					0	10	
3		71635-05		L\ CTN,250TI,CLASSIC	A	1.0000	EA	B					14	10	
3		66413	0	STAPLE,CTN	A	20.0000	EA	B					21	10	
3		71631	LI	END PAD,TOP FR.250TI	A	1.0000	EA	B					7	10	
3		71632	LI	END PAD,BOT.FR.250TI	A	1.0000	EA	B					7	10	
3		71633	LI	END PAD,REAR 250TI	B	2.0000	EA	B					7	10	
3		71634	LI	END PAD,INSERT 250TI	A	1.0000	EA	B					7	10	
3		65012-01	LH	TAPE,CTN,3"X165LINFT	B	18.0000	LF	B					7	10	
3		72298	0	FIBER MTRL.36"X 24"	B	6.0000	EA	B	19621	01-20-97	01-20-97		14		
3		49790P	L	PKG,MICROFOAM	A	6.0000	EA	B					21	10	
3		71702-07	RA	LBL,CTN,BQLC-250TI	D	2.0000	EA	B					21	10	
2		74554	RA	NTWK, 250TI CLASSIC	A	1.0000	EA	B					98	10	
2	X	68669-05	2H	M/I,035TIA-2	B	1.0000	EA	M					2	10	
3		62664	Z	RETAINER SCREEN	A	1.0000	EA	B					21	10	
3		66346	Z	035TI,FOAM PAD 7/8	C	1.0000	EA	B					21	10	
3		66555	Z	SCREW 8-32X5/16 BTHD	B	4.0000	EA	B					35	10	
3	P	70226		MAGNET ASSY,046TI	E	1.0000	EA	M					0	10	
4		66343-01	RT	BP/PP 0.960 P/DIA (1	C	1.0000	EA	B					60	10	
4		66344	DJ	MAG 1.280ID (1VC) 3.	E	1.0000	EA	B					84	10	
4		68646	RA	TP PLD 1.023ID (1VC)	E	1.0000	EA	B					63	10	
4		71666	L*	ADH,LO-VISCOSITY,326,MOD-AA	A	0.0200	OZ	B	18172	06-15-96	06-17-96		35		
4		71667	L*	PRIMER,ADH,LOCTITE,#12695	A	0.0031	OZ	B	18172	06-15-96	06-17-96		35	10	
3	P	68630-01		DIAP/CVR ASSY,035TIA	B	1.0000	EA	M					0	10	
4		68643-01	RB	FACEPLATE-035TI RND/	K	1.0000	EA	B					56	10	
4		66341-01	DH	VC ASSY .980ID .080	P	1.0000	EA	B					35	10	
4		70192-02	Z	INSULATOR, T/P	B	1.0000	EA	B					21	10	
4		20436S	LH	SOLDER MULT O/P 250	A	0.0080	OZ	B					28	10	
4		29368S	L*	BOSTIK WHT O/P 50GAL	D	0.0070	OZ	B					42	10	
4		63628A	L*	ACCELERATOR,HENKEL	A	0.0003	OZ	B	14120	04-25-94	04-25-94		15	10	
4		70191	Z	INSULATOR,DIAPH	B	1.0000	EA	B					21	10	
4		66337-05	5	DIAP TITANIUM COATED	A	1.0000	EA	B					2	10	
4		331510-001	I	ADH,SICO-MET/63,CA	A	0.0001	OZ	B	17434	04-03-96	04-03-96				
3		71514-01	Z	FOAM PAD, 1/8 THICK	A	1.0000	EA	B					21	10	
3		62711	RB	SCRN,PNTD	A	1.0000	EA	B	20787	01-26-98	01-26-98		75		
2	X	74535-01	HP	GRILL.ASSY,250TI(LH)	B	1.0000	EA	M					3	10	
3	X	74535-0199	3L	GRILLE-S.ASSY W/RLH	A	1.0000	EA	M					3	10	
4	X	74535-0188	HP	GRILLE S.ASSY L.H.	C	1.0000	EA	M					3	10	
5	X	74727	HG	GRILLE FRONT L/R H.	A	1.0000	EA	M					3	10	
6		65490-06	WR	1/2X61X109 FIBER BRD	A	4.0000	SF	B	14182	10-02-93	10-02-93		56	10	
5	X	74728	HG	GRILLE SIDE L/R HAND	A	1.0000	EA	M					3	10	
6		65490-06	WR	1/2X61X109 FIBER BRD	A	0.5450	SF	B	14182	10-02-93	10-02-93		56	10	
5		20168S	L*	ADH-WHT GLUE	B	0.0010	GL	B					7	10	
5		39106S	0	NAIL,FINISHING 1"	A	12.0000	EA	B	20653	11-13-97	11-18-97		21		
3	P	74735-01		GRILLE-CLOTH BLK L.H	A	1.0000	EA	M					0	10	
4		50504P	RB	GRILLE CLOTH-BLACK	A	7.8200	SF	B					56	10	
3		65961	RA	GRILLE PIN		6.0000	EA	B					56	10	
3	P	303699-001		ADH,3M,FB2000	C	4.0470	SF	M	14420				0	10	
4		303699-003	L*	ACTIVATOR,3M,FB2000	A	0.0020	GL	B	19869	03-06-97	03-06-97		35		
4		303699-002	L*	ADH,3M,FB2000	A	0.0162	GL	B	20667	11-17-97	11-17-97		35		
3	P	334280-001		STAIN/ACETONE MIXTURE	C	0.0041	GA	M	20861	02-20-98	02-20-98				
4		31098S	L*	ACETONE O/P 1785 LBS	A	0.2624	OZ	B	21455	10-12-98	10-12-98		7		
4		41142S	L*	STAIN,BLK,CONTACT,E3	A	0.0020	GL	B	21455	10-12-98	10-12-98		21		
2	P	72249-1218		BRCD,250TIBQLC	A	1.0000	EA	M					2	10	

OCT 23 1998

Indented Bill of Materials  
Procedure: ECC-R-08 - Account: ECC-NMG54  
Effectivity Date : 10-23-98

Page 14

250TIBQLC - 250TI BLK LCQR CLSC

.Level.	X	..Part Number..	PC	.....Description.....	Rev	Quantity.	U/M.	MB	.ECO....	ECO Date	Strt Use	End Use	LdTm	PkOp	*
3		73265	Z	LBL STOCK,4.625X4.12	A	1.0000	EA	B					28	10	
3		72471	Z	RIBBON,XFR,THRM,4.5"x1180	A	4.7500	IN	B					21	10	
2	X	334557-001		BEZEL,PNTD-250TI	A	1.0000	EA	M	20988	04-22-98	04-22-98				
3	X	334067-001		BEZEL,PNTD-250TIJUBILEE	A	1.0000	EA	M			04-15-98			10	
4		333862-001		BEZEL,AL-250TIJUBILEE	A	1.0000	EA	B						10	
2		22372	RA	1-1/2 PHFLTHD MS BK	D	8.0000	EA	B	20988	04-22-98	04-22-98		35		

Procedure: ECC-R-08 - Account: ECC-NMG54

Effectivity Date : 10-23-98

250TIWQL - 250TI WHT LACQUER LH

Level	X	Part Number	PC	Description	Rev	Quantity	U/M	MB	ECO	ECO Date	Strt Use	End Use	LdTm	PkOp	*
0	X	250TIWQL	A6	250TI WHT LACQUER LH	D	1.0000	EA	M					2		
1	P	71557-03	UN	S/M,250TIWQL	E	1.0000	EA	M					0	995	
2	X	71558-01	RA	MFD ITEM,250TI LH	E	1.0000	EA	M					0	995	
3	X	71562-03	HL	BAFFLE LH,250LAQUER	A	1.0000	EA	M					3	10	
4		58524-06	WR	3/4X61X109,FIBERBRD	A	9.0000	SF	B	14638	04-08-94	04-08-94		56	10	
3	X	71563-01	HL	REAR PNL LH,250LACQU	B	1.0000	EA	M					3	10	
4		58524-06	WR	3/4X61X109,FIBERBRD	A	9.0000	SF	B	14638	04-08-94	04-08-94		56	10	
3	X	71564-01	HL	SIDE VER LH,250 LAC	B	1.0000	EA	M					3	10	
4		58524-06	WR	3/4X61X109,FIBERBRD	A	5.6250	SF	B	14638	04-08-94	04-08-94		56	10	
3	X	71565-01	HL	SIDE 13DEG LH,250LAC	B	1.0000	EA	M					3	10	
4		58524-06	WR	3/4X61X109,FIBERBRD	A	5.6250	SF	B	14638	04-08-94	04-08-94		56	10	
3	X	71566-01	HL	TOP PNL LH,250 LAC	B	1.0000	EA	M					3	10	
4		58524-06	WR	3/4X61X109,FIBERBRD	A	0.8000	SF	B	14638	04-08-94	04-08-94		56	10	
3	X	71578-01	HL	BOT PNL,LEFT 250 LAC	B	1.0000	EA	M					3	10	
4		58524-06	WR	3/4X61X109,FIBERBRD	A	2.2500	SF	B	14638	04-08-94	04-08-94		56	10	
3	X	62840	HL	SUB-ENC, TOP C250	B	1.0000	EA	M					3	10	
4		20889-24	WP	5/8X5X12,P/B U/F	A	0.5130	SF	B	14049	09-08-93	09-08-93		10	10	
3	X	62840-01	HL	SUB-ENC,BOT C250	A	1.0000	EA	M					3	10	
4		20889-24	WP	5/8X5X12,P/B U/F	A	0.5130	SF	B	14049	09-08-93	09-08-93		10	10	
3	X	62841	HL	SUB-ENCL,SIDE C250	A	2.0000	EA	M					3	10	
4		20889-24	WP	5/8X5X12,P/B U/F	A	0.7892	SF	B	14049	09-08-93	09-08-93		10	10	
3	X	62842	HL	SUB-ENCL,BACK C250	A	1.0000	EA	M					3	10	
4		20889-24	WP	5/8X5X12,P/B U/F	A	0.7696	SF	B	14049	09-08-93	09-08-93		10	10	
3	P	47224-166		SOUND PAD, 12 X 20	A	1.0000	EA	M	218M	08-25-89	08-25-89		0	10	
4		22389P	0	1"THK.FIBERGLASS	D	1.6667	SF	B					14	10	
3	X	63060-01	HL	STIF,SIDE LOWER C250	B	3.0000	EA	M					3	10	
4		53147P	WN	DUGFR 1X3XR/L #1 COM	D	3.1596	LF	B					14	10	
3	X	63060-02	HL	STIF,SIDE CENTR C250	A	2.0000	EA	M					3	10	
4		53147P	WN	DUGFR 1X3XR/L #1 COM	D	1.8518	LF	B					14	10	
3	X	63060-03	HL	STIF,SIDE UPPER C250	A	2.0000	EA	M					3	10	
4		53147P	WN	DUGFR 1X3XR/L #1 COM	D	1.5972	LF	B					14	10	
3		56144	RA	PORT TUBE 5.31IDX4.0	KX	1.0000	EA	B					28	10	
3	X	56145	HL	PLUG VARIOUS MODELS		1.0000	EA	M					3	10	
4		31329-06	WR	PB BLK FL 3/4X61X109	C	0.2200	SF	B	14638	04-08-94	04-08-94		56	10	
3	X	62844	HL	CLEAT,PNL TOP C250	C	1.0000	EA	M					3	10	
4		55833P	WN	SHOP PNE 3/4X3/4XR/L	A	0.8481	LF	B					21	10	
3	X	62845	HL	CLEAT PN VERT S L250	A	1.0000	EA	M					3	10	
4		55833P	WN	SHOP PNE 3/4X3/4XR/L	A	4.6296	LF	B					21	10	
3	X	62846	HL	CLEAT,PNL 13DEG C250	B	1.0000	EA	M					3	10	
4		55833P	WN	SHOP PNE 3/4X3/4XR/L	A	4.6407	LF	B					21	10	
3	X	62847	HL	CLEAT,BOTM/BACK C250	A	1.0000	EA	M					3	10	
4		55833P	WN	SHOP PNE 3/4X3/4XR/L	A	1.9259	LF	B					21	10	
3	X	62964	HL	CLEAT,BOT VERT C250	B	1.0000	EA	M					3	10	
4		55833P	WN	SHOP PNE 3/4X3/4XR/L	A	1.0463	LF	B					21	10	
3	X	62965	HL	CLEAT,BOT 13DEG C250	C	1.0000	EA	M					3	10	
4		55833P	WN	SHOP PNE 3/4X3/4XR/L	A	1.0463	LF	B					21	10	
3	X	62968-01	HL	CLEAT,BOT/FRNT,C250L	A	1.0000	EA	M					3	10	
4		55833P	WN	SHOP PNE 3/4X3/4XR/L	A	1.9664	LF	B					21	10	
3	P	62848		PAD,SND SIDE C250	A	2.0000	EA	M					0	10	
4		22389P	0	1"THK.FIBERGLASS	D	9.2000	SF	B	494P	07-19-91	07-19-91		14	10	
3	P	71640		SOUND PAD,REAR PANEL	A	1.0000	EA	M	218M	08-25-89	08-25-89		0	10	
4		22389P	0	1"THK.FIBERGLASS	D	4.0000	SF	B					14	10	
3	P	53189		SOUND PADDING FIBRGL	C	1.0000	EA	M					0	10	

Procedure: ECC-R-08 - Account: ECC-NMG54

Effectivity Date : 10-23-98

250TIWQL - 250TI WHT LACQUER LH

Level	X	Part Number	PC	Description	Rev	Quantity	U/M	MB	ECO	ECO Date	Strt Use	End Use	LdTm	PkOp	*
4		22389P	0	1"THK.FIBERGLASS	D	1.7180	SF	B	494P	07-19-91	07-19-91		14	10	
3	P	57197		SOUND PADDING FIBRGL	B	1.0000	EA	M					0	10	
4		22389P	0	1"THK.FIBERGLASS	D	0.8333	SF	B					14	10	
3		59931S	0	NAIL,SPOT.3/16x1-1/8	%	80.0000	EA	B					21	10	
3		20168S	L*	ADH-WHT GLUE	B	0.0500	GL	B					7	10	
3		66730	LH	ADH,HOT MELT,DIP	A	0.0100	LB	B					35	10	
3	X	63974	HL	CORNER BLOCK L250	B	2.0000	EA	M					3	10	
4		55833P	WN	SHOP PNE 3/4X3/4XR/L	A	0.3334	LF	B					21	10	
3		22370	RB	#8X2 PH FL HD WD SCR	D	14.0000	EA	B					35	10	
3	X	52073	HL	CLEAT, .75X.75X10.31	A	2.0000	EA	M	218M	08-25-89	08-25-89		3	10	
4		55833P	WN	SHOP PNE 3/4X3/4XR/L	A	1.7186	LF	B					21	10	
3	X	62580	HL	CLEAT FR HORIZ 2506		1.0000	EA	M					3	10	
4		55833P	WN	SHOP PNE 3/4X3/4XR/L	A	0.9740	LF	B					21	10	
3	X	60617	HL	PORT CLEAT,12" 4560		2.0000	EA	M					3	10	
4		55833P	WN	SHOP PNE 3/4X3/4XR/L	A	2.0000	LF	B					21	10	
3	P	47224-84		SOUND PADDING FIBRGL	B	1.0000	EA	M	218M	08-25-89	08-25-89		0	10	
4		22389P	0	1"THK.FIBERGLASS	D	0.3542	SF	B					14	10	
3	X	59854	HL	CLEAT 4530BK		1.0000	EA	M					3	10	
4		55833P	WN	SHOP PNE 3/4X3/4XR/L	A	1.0833	LF	B					21	10	
3		62784	WN	GLUE BLOCK 3/4SQX2"L	C	2.0000	EA	B					28	10	
3	X	71603	HL	CLEAT,6DEG ANG SIDE	A	1.0000	EA	M					3	10	
4		55833P	WN	SHOP PNE 3/4X3/4XR/L	A	0.6042	LF	B					21	10	
3		61861	Z	T-NUT,10-32	A	8.0000	EA	B					42	10	
3		61859	RA	T-NUT 6-32X11/32	A	4.0000	EA	B					42	10	
3	X	71584	HL	BASE PNL,250TI LAC	A	1.0000	EA	M					3	10	
4		60238	WN	UNTEMP HB 1/4X48X96		2.2857	SF	B					21	10	
3		67375	RT	#8X1-1/4,FLT,PH,PTBD	B	2.0000	EA	B					35	10	
3		39106S	0	NAIL,FINISHING 1"	A	22.0000	EA	B	20653	11-13-97	11-18-97		21		
2	P	71567P	M	BEZEL,ALUM 250TI LAC	A	1.0000	EA	M	263M	09-20-89	09-20-89		0	995	
3		71567	YM	BEZEL,ALUM 250TI LAC	A	1.0000	EA	B					15	10	
2	X	65421-03	A7	M/I, G250TIBKL	E	1.0000	EA	M					10	995	
3	P	303699-001		ADH,3M,FB2000	C	4.0470	SF	M	14420				0	995	
4		303699-003	L*	ACTIVATOR,3M,FB2000	A	0.0020	GL	B	19869	03-06-97	03-06-97		35		
4		303699-002	L*	ADH,3M,FB2000	A	0.0162	GL	B	20667	11-17-97	11-17-97		35		
3		65961	RA	GRILLE PIN		6.0000	EA	B					56	995	
3	P	62903-03	UN	GRILLE CLTH G250BKCL	A	1.0000	EA	M					0	995	
4		50504P	RB	GRILLE CLOTH-BLACK	A	5.3000	SF	B					56	995	
3	X	65460-01	H	GRILLE FRM 250TIL	C	1.0000	EA	M					3	995	
4		62286-06	W?	FB U/F 5/8X61X109	A	3.7500	SF	B					56	10	
3	P	334280-001		STAIN/ACETONE MIXTURE	C	0.0041	GA	M	20853	02-20-98	02-20-98				
4		31098S	L*	ACETONE O/P 1785 LBS	A	0.2624	OZ	B	21455	10-12-98	10-12-98		7		
4		41142S	L*	STAIN,BLK,CONTACT,E3	A	0.0020	GL	B	21455	10-12-98	10-12-98		21		
2	P	59605-02P		M/I LE14H-1 FOR FURN		1.0000	EA	M					0	995	
3	X	59605-02	2D	M/I,LE14H-1	C	1.0000	EA	M					2	10	
4	X	59642-02	M3	COV,MAG,THERMOPLSTC RBR	F	1.0000	EA	M					35	10	
5		LS1083		VYL,TEKNOR APEX,3174/75	A	0.0671	LB	B						10	
5		LS1085		REED,UN0055P,DEEP_BLK	A	0.0037	LB	B						10	
4	P	66596-01		MAGNET ASSY 4"	F	1.0000	EA	M					0	10	
5		66585-01	YM	BP/P EXT 7.750OD 1.0	D	1.0000	EA	B					2	10	
5	X	59867-0186	XP	DEBURRED,4"COND/RING	F	1.0000	EA	M					2	10	
6		59867-01	RT	COND RING 30540ID 3.	E	1.0000	EA	B					35	10	
5		59552-01	MI	T/P PLD 3.999ID (3VC	H	1.0000	EA	B					85	10	
5		66597-01	Y1	POLE PIECE 3.879OD 0	C	1.0000	EA	B					2	10	

Procedure: ECC-R-08 - Account: ECC-NMG54

Effectivity Date : 10-23-98

250TIWQL - 250TI WHT LACQUER LH

Level	X	Part Number	PC	Description	Rev	Quantity	U/M	MB	ECO	ECO Date	Strt Use	End Use	LdTm	PkOp	*
5		59548-01		RT MAG 4.600ID (3VC) 8.	G	1.0000	EA	B					84	10	
5		63507		L* ACTIVATOR, ACRYLIC	B	0.0160	OZ	B					42	10	
5		63506		L* ADHESIVE, ACRYLIC	B	0.1600	OZ	B					35	10	
4		50201		Z D/DOME 4.025/DIA 3.9	R	1.0000	EA	B					49	10	
4		57369-18		JR FOILCAL LE14H-1	A	1.0000	EA	B					70	10	
4		60925		RT FOAM PLUG	A	1.0000	EA	B					21	10	
4		29326S		L* BOSTIK BRN O/P 75GAL	B	0.0780	OZ	B					42	10	
4	P	21811		MOULDING 39 INCHES		1.0000	EA	M					0	10	
5		29942P		RA VINYL EXTRUSION	B	3.2750	LF	B					49	10	
4	P	62357		C/C ASSY LE14H-1 4IN	H	1.0000	EA	M					0	10	
5		52729S		L* ABELSTICK,O/P-300	B	0.0600	EA	B					28	10	
5		48839-01		OC VC ASSY 3.90ID .750	A	1.0000	EA	B					7	10	
5		58605		Z EYELET - USM SE33	A	2.0000	EA	B					42	10	
5		66180-115		Z TINSEL/PIGTAIL LEAD	B	2.0000	EA	B					56	10	
5		51164		0 SPIDER 7.0DIA 4"VCID	J	1.0000	EA	B					49	10	
5	P	29368-01S		BOSTIK DYED BLACK		0.0050	OZ	M	146M	10-24-89	10-24-89		0	10	
6		29368S		L* BOSTIK WHT O/P 50GAL	D	0.0050	OZ	B					42	10	
6		29454S		L1 DYE, BLUE O/P 1	B	0.0000	GL	B					28	10	
6		47417S		LB BLACK POWDER DYE		0.0000	LB	B					42	10	
5		29474S		LH SOLDER ROSIN O/P 50	A	0.0080	OZ	B	146M	10-24-89	10-24-89		28	10	
5		63628A		L* ACCELERATOR,HENKEL	A	0.0050	OZ	B	14120	04-25-94	04-25-94		15	10	
5		65336		L* BLK MAX ADHS/LOCTITE	A	0.0100	OZ	B	146M	10-24-89	10-24-89		35	10	
5	X	71581-01		XC CONE COMP 12.160DIA	A	1.0000	EA	M	146M	10-24-89	10-24-89		2	10	
6		71581		0 CONE COMP 12.160DIA	A	1.0000	EA	B					49	10	
6		62592		L* AQUAPLAS BLACK	A	0.1444	LB	B					28	10	
4		59631-01		Z SCREEN, BLACK	D	1.0000	EA	B					21	10	
4		58373		Z SCREW,10-32X3/8 PAN	C	6.0000	EA	B					35	10	
4		20436S		LH SOLDER MULT O/P 250	A	0.0120	OZ	B					28	10	
4	P	29368-01S		BOSTIK DYED BLACK		0.0700	OZ	M					0	10	
5		29368S		L* BOSTIK WHT O/P 50GAL	D	0.0696	OZ	B					42	10	
5		29454S		L1 DYE, BLUE O/P 1	B	0.0000	GL	B					28	10	
5		47417S		LB BLACK POWDER DYE		0.0000	LB	B					42	10	
4		61443		AU SPACER TUBE MYLAR 4"	A	0.0100	EA	B					35	10	
4	P	70637-02		FRAME ASSY,LE14H-1	C	1.0000	EA	M					2	10	
5	X	70636-02		XP FRM,BRHSD/PNTD-LE14	B	1.0000	EA	M					2	10	
6	P	68303		FRAME DEBURRED 14"	C	1.0000	EA	M					0	10	
7		68303-0099		0 FRM 12.750OD 5.500ID	B	1.0000	EA	B					35	10	
5		68719		Z GSKT,TERM,DUAL	A	1.0000	EA	B					21	10	
5		323892-001		Z TERMINAL,DUAL	B	1.0000	EA	B	16710	12-08-95	04-01-96		141		
4		63627		L* ADH,C.A.,SICO-MET	A	0.1050	OZ	B					42	10	
4		63628A		L* ACCELERATOR,HENKEL	A	0.0713	OZ	B					15	10	
4		63506		L* ADHESIVE, ACRYLIC	B	0.0400	OZ	B					35	10	
4		63507		L* ACTIVATOR, ACRYLIC	B	0.0040	OZ	B					42	10	
4		72266		L* ADH,SICO-MET,5181	A	0.0375	OZ	B					42	10	
4	P	74822		LABEL, DATE CODE	A	1.0000	EA	M	20773	01-20-98	01-21-98		0		
5		75225		Z LABEL STOCK,1.5"X.25	B	1.0000	EA	B					14	10	
5		72471		Z RIBBON,XFR,THRM,4.5"x1180	A	0.5417	IN	B					21	10	
4	P	74822		LABEL, DATE CODE	A	1.0000	EA	M	20773	01-20-98	01-21-98		0		
5		75225		Z LABEL STOCK,1.5"X.25	B	1.0000	EA	B					14	10	
5		72471		Z RIBBON,XFR,THRM,4.5"x1180	A	0.5417	IN	B					21	10	
2	P	62526-01P		M/I 108H FOR FURN		1.0000	EA	M					0	995	
3	X	62526-01		2C M/I,108H	S	1.0000	EA	M					2	10	
4	P	67182		MAGNET ASSY, 2118H	F	1.0000	EA	M			04-26-95		0	10	

Procedure: ECC-R-08 - Account: ECC-NMG54

Effectivity Date : 10-23-98

250TIWQL - 250TI WHT LACQUER LH

Level	X	Part Number	PC	Description	Rev	Quantity	U/M	MB	ECO	ECO Date	Strt Use	End Use	LdTm	PkOp	*
5		67158		Y1 POLE PIECE 1.982OD 0	D	1.0000	EA	B					2	10	
5		67157		YM BP/P EXT 4.500OD 1.4	J	1.0000	EA	B					5	10	
5		59647		DV MAG 2.315ID (2VC) 5.	D	1.0000	EA	B					84	10	
5		62354		RA T/P PLD 2.102ID (2VC	C	1.0000	EA	B					75	10	
5		67672		YM COND RING 1.750ID 1.	A	1.0000	EA	B					2	10	
5		63506		L* ADHESIVE, ACRYLIC	B	0.0800	OZ	B					35	10	
5		63507		L* ACTIVATOR, ACRYLIC	B	0.0080	OZ	B					42	10	
4	P	62545-02		FRAME ASSY108/116H-1	C	1.0000	EA	M		04-26-95			0	10	
5		68830-02		XP 108/116H-1 FRM PNT'D	C	1.0000	EA	B					2	10	
5		68172		Z TERMINAL DUAL	A	1.0000	EA	B					98	10	
5		68719		Z GSKT,TERM,DUAL	A	1.0000	EA	B					21	10	
4		62355		DH D/DOME 2.20/DIA 2.16	C	1.0000	EA	B		04-26-95			49	10	
4	P	62549-01		C/C ASSY 108H	M	1.0000	EA	M		04-26-95			0	10	
5		62548-02		OC VC ASSY 2.00ID .518	C	1.0000	EA	B					7	10	
5		62703		RT SPIDER 4.63DIA 2"VC/	B	1.0000	EA	B					49	10	
5	X	62549-0101		XC CONE COMP 7.870DIA	M	1.0000	EA	M	162M	07-11-89	07-11-89		2	10	
6		62356		RA CONE COMP 7.870DIA	C	1.0000	EA	B	162M	07-11-89	07-11-89		49	10	
6		62592		L* AQUAPLAS BLACK	A	0.0110	LB	B	162M	07-11-89	07-11-89		28	10	
5		66180-115		Z TINSEL/PIGTAIL LEAD	B	2.0000	EA	B	321T	07-19-93	07-19-93		56	10	
5		58605		Z EYELET - USM SE33	A	2.0000	EA	B					42	10	
5		20436S		LH SOLDER MULT O/P 250	A	0.0080	OZ	B					28	10	
5		63628A		L* ACCELERATOR,HENKEL	A	0.0150	OZ	B	14120	04-25-94	04-25-94		15	10	
5		63627		L* ADH,C.A.,SICO-MET	A	0.0305	OZ	B					42	10	
4		52926		Z SPACER TUBE MYLAR 2.	C	0.1000	EA	B		04-26-95			28	10	
4		52316		RT GASKET 8 IN 116A	H	4.0000	EA	B		04-26-95			21	10	
4		62498		RT ACOUSTIC FILLER	A	1.0000	EA	B		04-26-95			21	10	
4		58373		Z SCREW,10-32X3/8 PAN	C	4.0000	EA	B		04-26-95			35	10	
4		29326S		L* BOSTIK BRN O/P 75GAL	B	0.0500	OZ	B		04-26-95			42	10	
4		73549-02		Z SCREEN,706/708/710G	A	1.0000	EA	B		04-26-95			70	10	
4		20436S		LH SOLDER MULT O/P 250	A	0.0120	OZ	B		04-26-95			28	10	
4		65336		L* BLK MAX ADHS/LOCTITE	A	0.0275	OZ	B		04-26-95			35	10	
4		63627		L* ADH,C.A.,SICO-MET	A	0.0575	OZ	B		04-26-95			42	10	
4	P	29368-01S		BOSTIK DYED BLACK		0.0500	OZ	M		04-26-95			0	10	
5		29368S		L* BOSTIK WHT O/P 50GAL	D	0.0497	OZ	B					42	10	
5		29454S		L1 DYE, BLUE O/P 1	B	0.0000	GL	B					28	10	
5		47417S		LB BLACK POWDER DYE		0.0000	LB	B					42	10	
4		63628A		L* ACCELERATOR,HENKEL	A	0.0400	OZ	B	14120	04-25-94	04-25-94		15	10	
4		75225		Z LABEL STOCK,1.5"X.25	B	1.0000	EA	B	15444	04-26-95	04-27-95		14	10	
4		72471		Z RIBBON,XFR,THRM,4.5"x1180	A	1.0000	IN	B	15444	04-26-95	04-27-95		21	10	
2	P	65180P		M/I 104H FOR FURN		1.0000	EA	M					0	995	
3	X	65180		2C M/I,104H	M	1.0000	EA	M					2	10	
4	X	61713-05		XP FRM,BRSHD/PNTD-104	F	1.0000	EA	M	549L	05-25-89	05-25-89		2	10	
5		65900-02		RA FRM 4.050OD 2.060ID	C	1.0000	EA	B	18809	09-16-96	09-16-96		35	10	
4	P	65186		CONE ASSY 104H	A	1.0000	EA	M		04-26-95			0	10	
5		65186-01		2D CONE/SURRD 4.000DIA	E	1.0000	EA	B					2	10	
5		32096-01		RA SPIDER 2.31DIA 1"VC/	P	1.0000	EA	B					49	10	
5		65189		OC VC ASSY 1.016ID .22	F	1.0000	EA	B					7	10	
5		66179-50		RA PIGTAIL(TINSEL LEAD)	A	2.0000	EA	B					56	10	
5		58605		Z EYELET - USM SE33	A	2.0000	EA	B					42	10	
5		20436S		LH SOLDER MULT O/P 250	A	0.0001	OZ	B					28	10	
5		63628A		L* ACCELERATOR,HENKEL	A	0.0001	OZ	B	14120	04-25-94	04-25-94		15	10	
5		63627		L* ADH,C.A.,SICO-MET	A	0.0015	OZ	B					42	10	
5	P	29368-01S		BOSTIK DYED BLACK		0.0100	OZ	M	20661	11-14-97	11-14-97		0		

Procedure: ECC-R-08 - Account: ECC-NMG54

Effectivity Date : 10-23-98

250TIWQL - 250TI WHT LACQUER LH

Level	X	Part Number	PC	Description	Rev	Quantity	U/M	MB	ECO	ECO Date	Strt Use	End Use	LdTm	PkOp	*
6		29368S		L* BOSTIK WHT O/P 50GAL	D	0.0099	OZ	B					42	10	
6		29454S		L1 DYE, BLUE O/P 1	B	0.0000	GL	B					28	10	
6		47417S		LB BLACK POWDER DYE		0.0000	LB	B					42	10	
4		N50127		DG MAG 1.280ID (1VC) 3.	E	1.0000	EA	B	549L	05-25-89	05-25-89		84	10	
4		51868		RA D/DOME 1.31/DIA 1.16	D	1.0000	EA	B			04-26-95		49	10	
4		65184-01		DH BP/PP 0.995 P/DIA (1	C	1.0000	EA	B			04-26-95		75	10	
4	P	29931		LE5 TYPE 13 INCHES		1.0000	EA	M			04-26-95		0	10	
5		29942P		RA VINYL EXTRUSION	B	1.0830	LF	B					49	10	
4		67371		RB TP PLD 1.090ID (1VC)	A	1.0000	EA	B	549L	05-25-89	05-25-89		75	10	
4		53225		T8 TERMINAL BD LE5-6	F	1.0000	EA	B	549L	05-25-89	05-25-89		42	10	
4		53293		Z RIVET TC1-9-ST LE25	B	1.0000	EA	B	549L	05-25-89	05-25-89		56	10	
4		69172		RB SCREW 10-32X3/8 FIL	B	3.0000	EA	B	549L	05-25-89	05-25-89		35	10	
4		61558		Z SPACER TUBE MYLAR	B	0.1000	EA	B	549L	05-25-89	05-25-89		35	10	
4		75225		Z LABEL STOCK,1.5"X.25	B	1.0000	EA	B	15444	04-26-95	04-27-95		14	10	
4		72471		Z RIBBON,XFR,THRM,4.5"x1180	A	1.0000	IN	B	15444	04-26-95	04-27-95		21	10	
4		63506		L* ADHESIVE, ACRYLIC	B	0.0375	OZ	B	549L	05-25-89	05-25-89		35	10	
4		63507		L* ACTIVATOR, ACRYLIC	B	0.0038	OZ	B	549L	05-25-89	05-25-89		42	10	
4		63627		L* ADH,C.A.,SICO-MET	A	0.0550	OZ	B	549L	05-25-89	05-25-89		42	10	
4		63628A		L* ACCELERATOR,HENKEL	A	0.1002	OZ	B	14120	04-25-94	04-25-94		15	10	
4		65336		L* BLK MAX ADHS/LOCTITE	A	0.0200	OZ	B	549L	05-25-89	05-25-89		35	10	
4	P	29368-01S		BOSTIK DYED BLACK		0.0300	OZ	M	549L	05-25-89	05-25-89		0	10	
5		29368S		L* BOSTIK WHT O/P 50GAL	D	0.0298	OZ	B					42	10	
5		29454S		L1 DYE, BLUE O/P 1	B	0.0000	GL	B					28	10	
5		47417S		LB BLACK POWDER DYE		0.0000	LB	B					42	10	
4		20436S		LH SOLDER MULT O/P 250	A	0.0120	OZ	B	549L	05-25-89	05-25-89		28	10	
2	P	68669-04P		N 035TIA-1 FOR FURN.	A	1.0000	EA	M					0	995	
3	X	68669-04		2H M/I,035TIA-1	C	1.0000	EA	M					2	995	
4	P	68630		DIAP/CVR ASSY,035TI	J	1.0000	EA	M					0	10	
5		68643-01		RB FACEPLATE-035TI RND/	K	1.0000	EA	B					56	10	
5		66337-01		5 DIAP TITANIUM COATED		1.0000	EA	B	935L	06-07-89	06-07-89		2	10	
5		66341-01		DH VC ASSY .980ID .080	P	1.0000	EA	B	174N	05-14-90	05-14-90		35	10	
5		70192-02		Z INSULATOR, T/P	B	1.0000	EA	B	174N	05-14-90	05-14-90		21	10	
5		20436S		LH SOLDER MULT O/P 250	A	0.0080	OZ	B					28	10	
5		29368S		L* BOSTIK WHT O/P 50GAL	D	0.0070	OZ	B					42	10	
5		63628A		L* ACCELERATOR,HENKEL	A	0.0003	OZ	B	14120	04-25-94	04-25-94		15	10	
5		70191		Z INSULATOR,DIAPH	B	1.0000	EA	B					21	10	
5		59174		Z GLUE RING 044	C	0.2000	EA	B	360T	06-28-93	06-28-93		21	10	
5		331510-001		I ADH,SICO-MET/63,CA	A	0.0005	OZ	B	17434	04-03-96	04-03-96				
4		62664		Z RETAINER SCREEN	A	1.0000	EA	B					21	10	
4		66346		Z 035TI,FOAM PAD 7/8	C	1.0000	EA	B					21	10	
4		66555		Z SCREW 8-32X5/16 BTHD	B	4.0000	EA	B					35	10	
4	P	70226		MAGNET ASSY,046TI	E	1.0000	EA	M					0	10	
5		66343-01		RT BP/PP 0.960 P/DIA (1	C	1.0000	EA	B					60	10	
5		66344		DJ MAG 1.280ID (1VC) 3.	E	1.0000	EA	B					84	10	
5		68646		RA TP PLD 1.023ID (1VC)	E	1.0000	EA	B					63	10	
5		71666		L* ADH,LO-VISCOSTY,326,MOD-AA		0.0200	OZ	B	18172	06-15-96	06-17-96		35		
5		71667		L* PRIMER,ADH,LOCTITE,#12695	A	0.0031	OZ	B	18172	06-15-96	06-17-96		35	10	
4		71514-01		Z FOAM PAD, 1/8 THICK	A	1.0000	EA	B	856M	03-26-90	03-26-90		21	10	
4		62711		RB SCRIN,PNTD	A	1.0000	EA	B	20787	01-26-98	01-26-98		75		
2		71559		8 NTWK,250TI LACQUER	A	1.0000	EA	B					105	995	
2		20253		Z GASKET VINYL	B	1.0000	EA	B					35	995	
2		52671		RT GASKET REAR 116A	C	1.0000	EA	B					28	995	
2		21771		RB GASKET VINYL LE5-2	B	1.0000	EA	B					35	995	



## 250TIWQL - 250TI WHT LACQUER LH

Level	X	Part Number	PC	Description	Rev	Quantity	U/M	MB	ECO	ECO Date	Start Use	End Use	LdTm	PkOp	*
2		66553	Z	GASKET	D	1.0000	EA	B					28	995	
2		21847	RA	10-32X1 PHFLTHD BK	A	4.0000	EA	B					35	995	
2		33841	RA	SCR,#10-32X1"FILFLHD	A	4.0000	EA	B					35	995	
2		12704	RA	SCREW 6-32X1 FLTHD P	A	4.0000	EA	B					28	995	
2		22369	RA	#8X1 PHFLTHD WDS BK	D	3.0000	EA	B					35	995	
2		59460	Z	SCR,#8X3/4FLHDPH-BLK	A	8.0000	EA	B					35	995	
2	X	62843	HL	STIFF,FRNT/BACK C250	C	1.0000	EA	M	218M	08-25-89	08-25-89		3	995	
3		53147P	WN	DUGFR 1X3XR/L #1 COM	D	0.3472	LF	B					14	10	
2		71833	RA	#8-32X1/2",FLHD PH	A	4.0000	EA	B	410M	10-26-89	10-26-89		35	995	
2		20168S	L*	ADH-WHT GLUE	B	0.0010	GL	B	218M	08-25-89	08-25-89		7	995	
2		71561-01	DK	FOILCAL PLATE,250TIL	A	1.0000	EA	B	218M	08-25-89	08-25-89		56	995	
2	P	71560-03	UN	ASY,SHPNG-250TIWQL	D	1.0000	EA	M	218M	08-25-89	08-25-89		0	995	
3		71635	RD	CNT,250TI LACQUER	B	1.0000	EA	B	338M	10-05-89	10-05-89		21	995	
3		66413	O	STAPLE,CTN	A	20.0000	EA	B	410M	10-26-89	10-26-89		21	995	
3		71631	LI	END PAD,TOP FR.250TI	A	1.0000	EA	B					7	995	
3		71632	LI	END PAD,BOT.FR.250TI	A	1.0000	EA	B					7	995	
3		71633	LI	END PAD,REAR 250TI	B	2.0000	EA	B					7	995	
3		71634	LI	END PAD,INSERT 250TI	A	1.0000	EA	B					7	995	
3		65012-01	LH	TAPE,CTN,3"X165LINFT	B	18.0000	LF	B	410M	10-26-89	10-26-89		7	995	
3		72298	O	FIBER MTRL.36"X 24"	B	6.0000	EA	B	19621	01-20-97	01-20-97		14		
3		49790P	L	PKG,MICROFOAM	A	6.0000	EA	B	292M	09-14-89	09-14-89		21	995	
3		71702-03	EO	LBL,CTN,WQL-250TI	D	2.0000	EA	B	338M	10-05-89	10-05-89		21	995	
2		71616	RA	SCR,#6X5/8PHRDHDBRPL	A	4.0000	EA	B	218M	08-25-89	08-25-89		35	995	
2		65424-02	LF	MANUAL 250TI LACQUER	B	1.0000	EA	B					21	995	
2		48003-02	RA	LOGO 250TI	A	1.0000	EA	B					40	995	
2		71317	L3	GLOVES W/PLASTIC BAG	A	1.0000	EA	B					7	995	
2		66724	LN	ADH,HOT-MELT CARTHRED	A	0.0170	LB	B	410M	10-26-89	10-26-89		21	995	
2		N50777	Z	TECH NOTE LOW POWER	A	1.0000	EA	B					21	995	
2		N50630	RA	LITERATURE ENVELOPE	A	1.0000	EA	B					14	995	
2		71074	RA	WRENCH,TERM POST XPL	B	1.0000	EA	B					98	995	
2		63062	LH	STRIP CAULK,BLK	A	0.2000	EA	B					7	995	
2	P	71031-02	HI	GL.LACQ.FIN.-WHT.	E	22.6000	SF	M					0	995	
3	P	71006	E1	WHITE BASE COAT	C	0.1288	GL	M	465M	11-10-89	11-10-89		0	10	
4		71672	LD	BASE COAT,WHITE	A	0.0856	GL	B	381M	10-11-89	10-11-89		21	10	
4		71410	L?	REDUCING SOL,FAST	A	0.0214	GL	B	381M	10-11-89	10-11-89		21	10	
3	P	71032-02	URETHANE,WHITE		D	0.1198	GL	M	465M	11-10-89	11-10-89		0	10	
4		71011	LD	WHT.SALCHILUX URETH.	A	0.0599	GL	B	335M	10-05-89	10-05-89		21	10	
4		71012	LD	CAT,GLOSSLINE COMP.B	C	0.0509	GL	B	335M	10-05-89	10-05-89		21	10	
4		71411	LD	REDUCING SOL,SLOW	A	0.0030	GL	B	335M	10-05-89	10-05-89		21	10	
3	P	334065-001	PNT,PE,BASE COAT		B	0.5334	GA	M	20670	11-17-97	11-17-97				
4		334063-001	PNT,BLK,POLYESTER		%	0.5227	GA	B						10	
4		334064-001	PNT,PE,CATHALYST		%	0.0107	GA	B						10	
2		20305S	RA	GLIDE #20 5/8 DIA	A	4.0000	EA	B	355M	10-05-89	10-05-89		42	995	
2	X	70515-07	RA	PTB,4.125IDX5.0L,PLSTC,	M	1.0000	EA	M					56	995	
3		LS1067	RESIN,POLYSTYRENE		A	0.0000	LB	B			06-25-98			10	
3		LS1073	INK,PS,BLK		A	0.0000	LB	B			06-25-98			10	
2		61577	RB	SCREW,8X2,FLH BLK	B	6.0000	EA	B	444P	05-02-91	05-02-91		35	995	
2		22372	RA	1-1/2 PHFLTHD MS BK	D	4.0000	EA	B					35	995	
2	P	71031-04	UN	LOW GLOSS WHITELACQ	D	5.5347	SF	M	355M	10-05-89	10-05-89		0	995	
3	P	71006	E1	WHITE BASE COAT	C	0.0315	GL	M	465M	11-10-89	11-10-89		0	995	
4		71672	LD	BASE COAT,WHITE	A	0.0209	GL	B	381M	10-11-89	10-11-89		21	10	
4		71410	L?	REDUCING SOL,FAST	A	0.0052	GL	B	381M	10-11-89	10-11-89		21	10	
3	P	71032-04	UN	LOW GLOSS URETH.,WHT	B	0.0282	GL	M	736M	03-14-90	03-14-90		0	995	

OCT 23 1998

## Indented Bill of Materials

Page 59

Procedure: ECC-R-08 - Account: ECC-NMG54

Effectivity Date : 10-23-98

250TIWQL - 250TI WHT LACQUER LH

Level	X	Part Number	PC	Description	Rev	Quantity	U/M	MB	ECO	ECO Date	Strt Use	End Use	LdTm	PkOp	*
4		71643		DK LOW GLOSS WHITE POLY	A	0.0171	GL	B					28	995	
4		71644		LD LOW GLOSS POLY./CAT.	A	0.0092	GL	B					21	995	
4		71411		LD REDUCING SOL,SLOW	A	0.0005	GL	B					21	995	
3	P	334065-001		PNT,PE,BASE COAT	B	0.1306	GA	M	20670	11-17-97	11-17-97				
4		334063-001		PNT,BLK,POLYESTER	%	0.1280	GA	B						10	
4		334064-001		PNT,PE,CATHALYST	%	0.0026	GA	B						10	
2		65840		WG GRILLE RETAINER	B	6.0000	EA	B	355M	10-05-89	10-05-89		56	995	
2	P	72249-1083		AA BRCD,250TIWQL	A	1.0000	EA	M	266P	05-02-91	05-02-91		7	995	
3		73265		Z LBL STOCK,4.625X4.12	A	1.0000	EA	B					28	995	
3		72471		Z RIBBON,XFR,THRM,4.5"x1180	A	4.7500	IN	B					21	995	